

STANDARDS AND QUALITY IN EDUCATION 2013

Cabinet Member	Councillor David Simmonds
Cabinet Portfolio	Deputy Leader of the Council and Cabinet Member for Education and Children's Services
Officer Contact	Pauline Nixon, Residents Services
Papers with report	None

HEADLINE INFORMATION

Purpose of report	To report on the standards and quality of education in Hillingdon schools. It provides a summary of performance trends and inspection outcomes for the academic year 2012/13
Contribution to our plans and strategies	Informs the Children and Young People's Plan
Financial Cost	There are no financial implications arising from this report
Relevant Policy Overview Committee	Children, Young People and Learning Policy Overview Committee
Ward(s) affected	All

RECOMMENDATION

Cabinet notes the report and the improving attainment and outcomes of pupils in the London Borough of Hillingdon during the 2012/13 Academic Year.

INFORMATION

Reasons for recommendation

To provide the Cabinet with data on school performance in the Borough

Alternative options considered / risk management

None.

Comments of Policy Overview Committee(s)

The report will go to the Children, Young People and Learning POC for noting in February 2014.

Overview – main conclusions

1. The attainment and progress data analysed in this report inform Members on key issues of education within the Borough. Ofsted inspection outcomes are generally positive and reflect the good quality of education provided by Hillingdon schools.

The main findings are:

- Overall, results have improved for the ninth consecutive year and attainment for pupils in Hillingdon continues to rise throughout the key stages. Results overall remain either in line with or above national results.
 - Ofsted assessments show that 78% of secondary pupils and 80% of primary pupils attended a school which was judged as Good or Outstanding.
 - For Looked After Children results at Key Stage 2 are positive but Key Stage 4 outcomes are below the national average and require attention, whilst acknowledging that the cohort is small in number and subject to constant change.
 - SEN – outcomes for pupils at School Action are below national average for Key Stage 4 and require additional attention.
 - Success rates of pupils in Hillingdon's Adult Learning Services continued to rise from 88% to 89%.
 - Attainment for pupils within the London Borough of Hillingdon continues to improve; officers will continue to work with Schools to maintain the continued increase in positive outcomes for its pupils.
2. This remainder of this report is split into three sections: Summary of Standards (paragraphs 3 to 22), Summary of School Inspection Reports (paragraphs 23 to 26) and Detailed Performance Information (paragraphs 27 to 53).

Section 1: Summary of Standards

3. A summary of attainment in 2013 and the priorities for further improvement are set out below. Information is presented in relation to each Key Stage and is based on 2013 external examination results. Full details of achievements are described in Section 3: Detailed Performance Information. It should be noted that points made regarding the performance of particular groups of pupils (e.g. Looked After Children – LAC or Special Educational Needs – SEN) are often based on small cohort sizes and so there is the potential for significant variation year on year.

Foundation Stage (Age 3 to 5)

4. With the changes to the Early Years Foundation Stage Profile in 2012/13 officers are not now able to make comparisons between the results for this year and previous years. It is recognised across several local authority moderation teams that there is an inconsistency within teams re the behaviours expected in order to achieve the Early Learning Goals. When looking at individual Early Learning Goals Hillingdon children perform at least in line with or above in all but one, "Understanding the World". Against national outcomes we score 4% above in Reading, 1% above in Writing, 4% above in

Number and in Shape, Space and Measure and 1% above in Speaking. However when looking at the “good level of development” the average in Hillingdon is 42% whilst the national average is 52%. Girl’s outcomes continue to be higher than those of boys with a 14% difference in the attainment of the good level of development.

5. Priorities for 2013/14 include:

- *To support Teachers in making secure and consistent judgements against national standards through rigorous moderation and agreement trialling.*
- *Narrowing the gap between the attainment of boys and girls to address the difference between Hillingdon’s performance and national performance.*
- *To promote effective practices for the development of speaking and listening.*

Key Stage 1 (Age 5 to 7)

6. Key Stage 1 results are set at various threshold levels – W, 1, 2, 3 and 4. Level 2 is the expected result and is in turn split into three sub levels - 2a = at the top end of level 2, 2B = secure level 2 and 2c = just within level 2.
7. The proportions of pupils reaching the thresholds of level 2+, level 2B+ or level 3 in Reading, Writing or Mathematics have all increased this year.
8. Attainment for Key Stage 1 was in line with or above national in all instances and in line with or above outer London levels in most instances.
9. This is the second year of the Year 1 Phonics Screening Check; it consists of a list of 40 words, half real words and half non-words, which Year 1 children read to a teacher. The threshold in 2013 was 31 successful words out of 40. 71% of Hillingdon pupils achieved the required standard compared to 57% in 2012 – a much improved result. This was above national levels but slightly below outer London levels.
10. Year 2 pupil resits for Phonics were in line with the national average at 68%, outer London data is not currently available.
11. Priorities for 2013/14 include:
 - *Narrowing the Gap between boys and girls in relevant areas;*
 - *Continue to maintain the improvement and remain above the national average in all areas.*

Key Stage 2 (Age 7 to 11)

12. The Key Stage 2 tests changed in 2013, further details can be found later in this report. Results are set at various levels – N, 2, 3, 4, 4B, 5 and 6. Level 4 is the expected level and (new for 2013) has been split into levels 4 and 4B – the latter defined as “Good level 4”. Level 4B applies to all tests (Reading, Maths, Grammar Punctuation & Spelling) apart from Writing which is a teacher assessment.
13. Attainment at the end of Key Stage 2 and progress between Key Stage 1 and Key Stage 2 Mathematics was generally higher than in previous years and in line with or above national levels using most measures. In particular:
 - a) The proportion attaining Level 4+ in Maths remains above national levels at 87% (national 85%) and has moved above outer London levels (86%).
 - b) Recently released Performance Tables show that the percentage achieving Level 4 or above in Reading, Writing and Maths has increased from 76% to 78% in 2013. The percentage making expected progress in those subjects are as follows: Reading 89%, Writing 93% and Maths 91%.
 - c) The floor levels are more challenging in 2013 and are now set at 60% (previously 55%). These are judged against four measures for Reading, Writing and Maths. 1 school is below floor standards (compared to 0 in 2012). In 2014 the floor standard will rise again to 65%.

14. Priorities for 2013/14 include:
- *Continue to increase achievement at Key Stage 2 to be above the national average for all areas. Improving the scores at level 5+ for Reading and Writing.*

Key Stage 3 (Age 11 to 14)

15. Since the removal of testing at the end of Key Stage 3, four years ago, there has only been limited attainment data available.

Key Stage 4 (Age 14 to 16)

16. Attainment at the end of Key Stage 4 has remained static for 5 A* – C all subjects but has improved for 5 A* - C including English and Maths – a harder measure to achieve nationally.
- a) 86% of pupils attained 5+ A*-C grades in 2013 (all subjects) – no change on 2012 but above both national and outer London averages.
 - b) Around 61% of pupils attained 5+ A*-C (including English and Mathematics) – up two points on last year and above the national average but below the outer London average.

17. Priorities for 2013/14 include:
- *Supporting the three remaining LA Secondary Schools for which the LA retains responsibility (i.e. non Academies). All are above floor standards but 2 are below national averages in certain categories.*
 - *Supporting LA schools to move from “Requiring Improvement” to “Good” in the OFSTED ratings.*

Key Stage 5 (Age 16 to 19)

18. Outcomes in terms of Average Point Score per Pupil and Average Point Score per Subject remain below the national average measured across all Secondary Schools. However, progress measures which take into account the prior attainment of pupils at the end of Key Stage 4 show higher outcomes than the national standards.

Looked After Children (LAC)

19. When looking at 2012/2013 attainment of the children looked after continuously for 12 months during the year ending 31 March 2013:
- a) At Key Stage 2, 50% achieved the expected level in English and Mathematics in 2013 (unchanged from 2012) – equalling the national average.
 - b) At Key Stage 4, the percentage of children looked after achieving A*-C in all subjects remained constant at 15% in 2013 (equalling the national average). The percentage achieving 5+ A*-C including English and Mathematics fell to 10% from 15% in 2012 (15% being the national average).

Special Education Needs (SEN)

20. When looking at Key Stage 1 attainment for pupils with SEN we can see improvements in both Reading, Writing and Maths at level 2b+ for all 3 SEN categories (Action, Action Plus and Statemented).

21. For 2012/2013 Key Stage 2 attainment for pupils with SEN it is difficult to compare with previous years due to the changes to this year's examinations. The results for those pupils with a statement achieving Level 4+ in Maths (which did not change) showed an improvement on 2012 but those in other SEN categories remained virtually unchanged.

22. For Key Stage 4 there was a significant improvement for pupils with SEN Action Plus & Statemented attaining 5+ A*-C in both all categories and also those including English and Mathematics GCSE's. However, pupils at SEN Action dipped in both of these measures.

Section 2: Summary of School Inspection Reports

23. In the academic year 2012/13 twenty one Hillingdon mainstream schools (including Academies) were inspected by Ofsted using their new framework. The main difference has been the changing of the "Satisfactory" rating to "Requires Improvement" The 4 categories are now 1) Outstanding, 2) Good, 3) Requires Improvement and 4) Inadequate.

24. The overall effectiveness of twelve of these schools was deemed to be Outstanding or Good with 9 being judged as Requiring Improvement. None were judged as Inadequate.

25. The tables below summarise the inspection findings across schools both nationally and across the London Borough of Hillingdon:

Table 1: Current position on OFSTED judgement of Hillingdon schools

Percentage of schools (number of schools in brackets)								
	1) Outstanding		2) Good		3) Satisfactory or Requires Improvement (post 9/2012)		4) Inadequate	
	National*	LBH	National*	LBH	National*	LBH	National*	LBH
Primary	19%	22.7% (15)	60%	57.6% (38)	21% for categories 3 and 4	(13) 19.7%	See category 3	0
Secondary	26%	38.9% (7)	47%	38.9% (7)	22%	22.2% (4)	4%	0
Combined	-	26.2% (22)	-	53.6% (45)	-	20.2% (17)	-	0

* National figures as at 31/03/2013

26. This table shows:

- A larger proportion of schools were assessed as Good or Outstanding locally than nationally,
- 80% of Primary School pupils attend a school which is judged to be Good or Outstanding, corresponding figure for secondary schools is 78%.
- The Ofsted framework was revised in Sept 2012; many schools were affected by this. Some Hillingdon schools maintained Good and Outstanding judgements; however (excluding Academies) six primaries and one secondary school were judged as "Requires Improvement".

Section 3: Detailed Performance Information

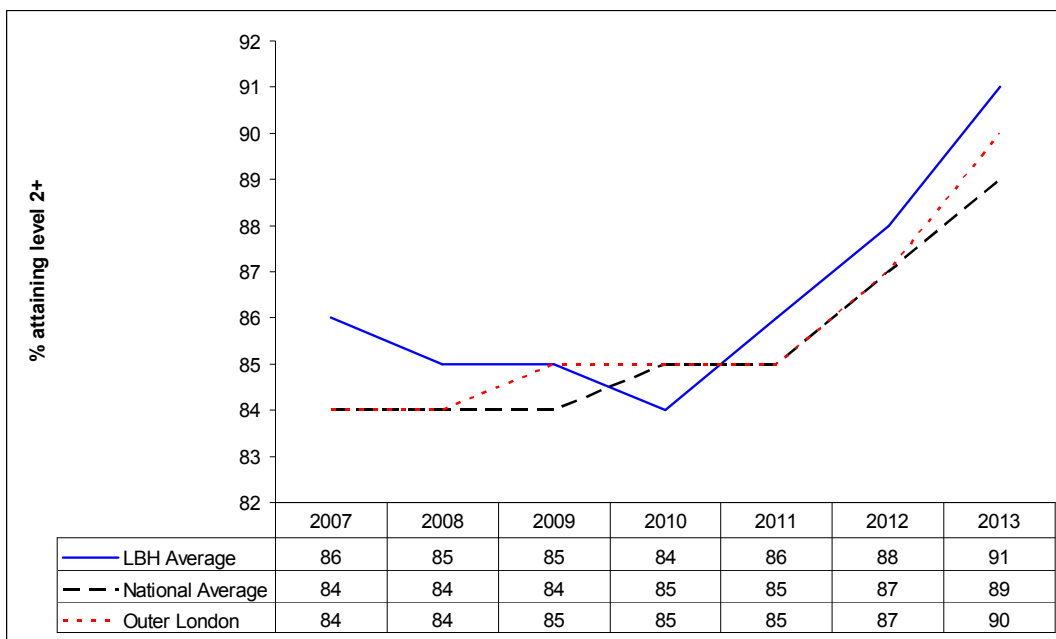
Foundation Stage

The Foundation Stage examinations have been changed for 2013 so it is not possible to draw comparisons with previous year's performance. However, officers can report that the average total points for the cohort = 30.8 (national 51.5 contextually similar = 53%). Good level of development = 42%, (national = 52%, contextually similar = 53%). Categories covered include Communication and Language, Physical Development, Personal Social and Emotional Development, Literacy, Maths, Understanding the World and finally Expressive Arts and Design.

Key Stage 1

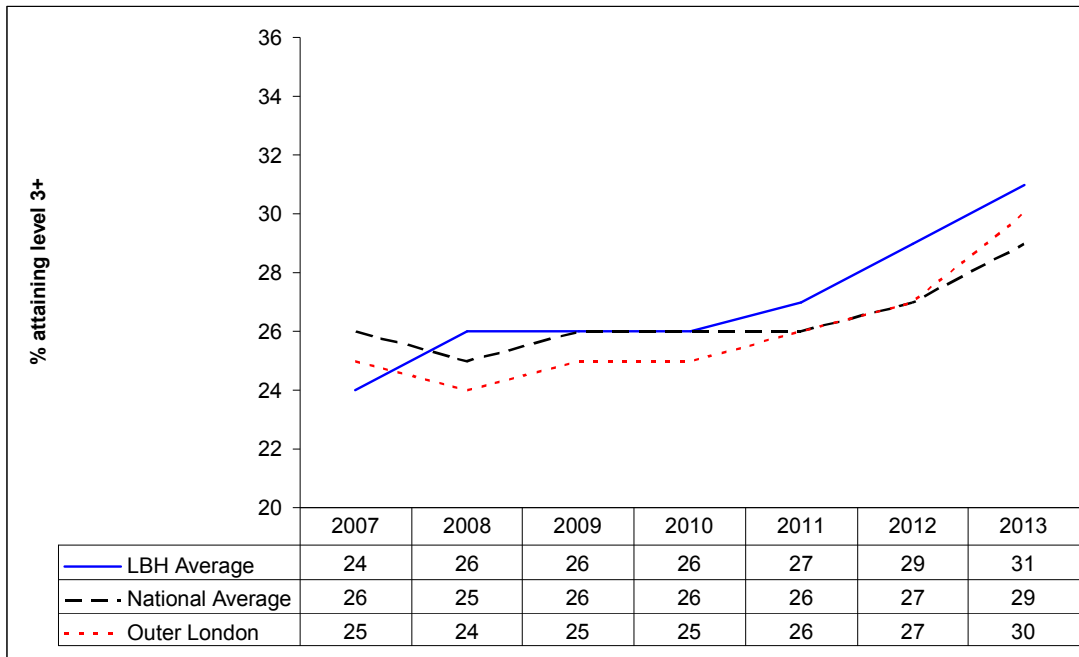
Reading

Chart 1: Percentage of Pupils attaining Level 2 or above in Key Stage 1 in READING



27. Chart 1 shows the proportion of Borough pupils attaining level 2 or above in Reading. The final figure is higher than 2012 and has been improving since 2009. Local outcomes remain higher than both those nationally and for Outer London. Level 2B+ = increased from 77% in 2012 to 81% in 2013 – higher than both the National average (79 %,) and outer London average (80%).

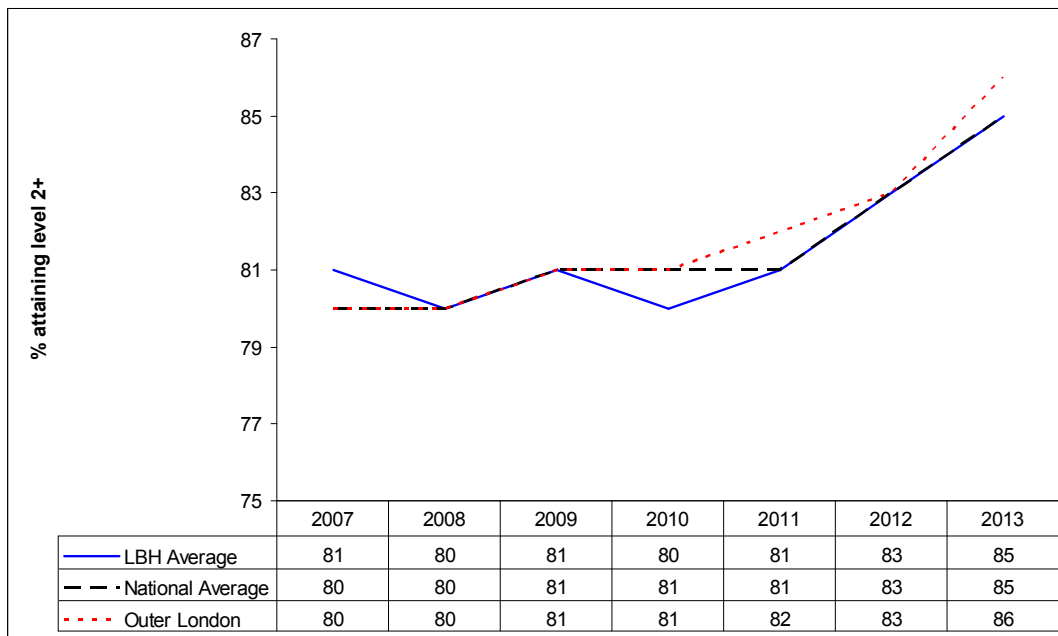
Chart 2: Percentage of Pupils attaining Level 3 or above in Key Stage 1 in READING



28. Chart 2 shows the proportion of Borough pupils attaining level 3 or above in Reading at Key Stage 1. The proportion of LBH educated pupils reaching level 3 has increased for the third year running. The proportion of children in the Borough reaching this level is above the average both nationally and for Outer London.

Writing

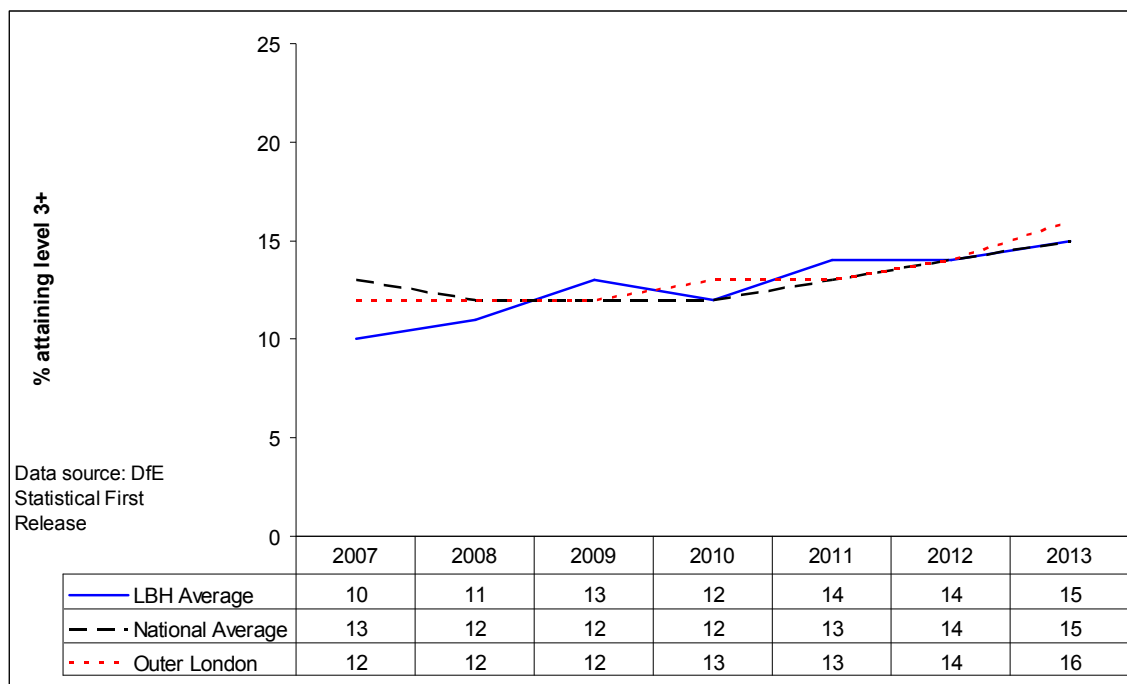
Chart 3: Percentage of Pupils attaining Level 2 or above in Key Stage 1 in WRITING



c) Chart 3 shows the proportion of Borough pupils attaining level 2 or above in Writing. The proportion of pupils reaching this level continues to be in line with national averages for the third year in succession but just below the Outer London average.

Level 2B+ = increased from 66% in 2012 to 68% in 2013 – above the national average (67%) but just below the outer London average(69%).

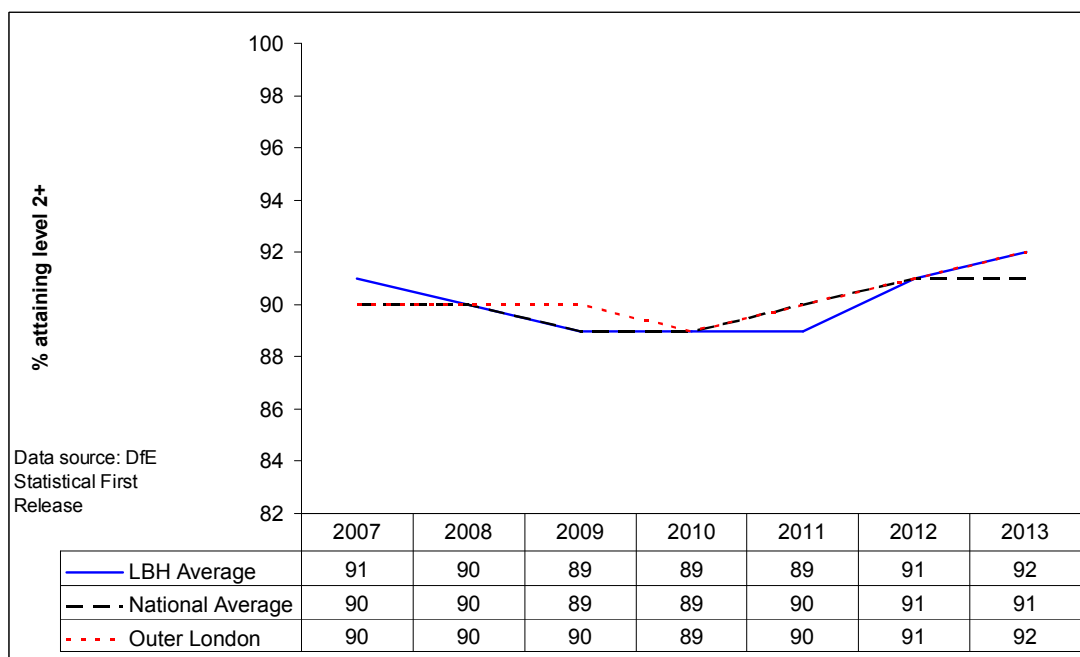
Chart 4: Percentage of Pupils attaining Level 3 or above in Key Stage 1 in WRITING



29. Chart 4 shows the proportion of Borough pupils attaining level 3 or above in Writing at Key Stage 1. Hillingdon’s results improved on the 2012 results and remain level with the national average but just below the outer London average.

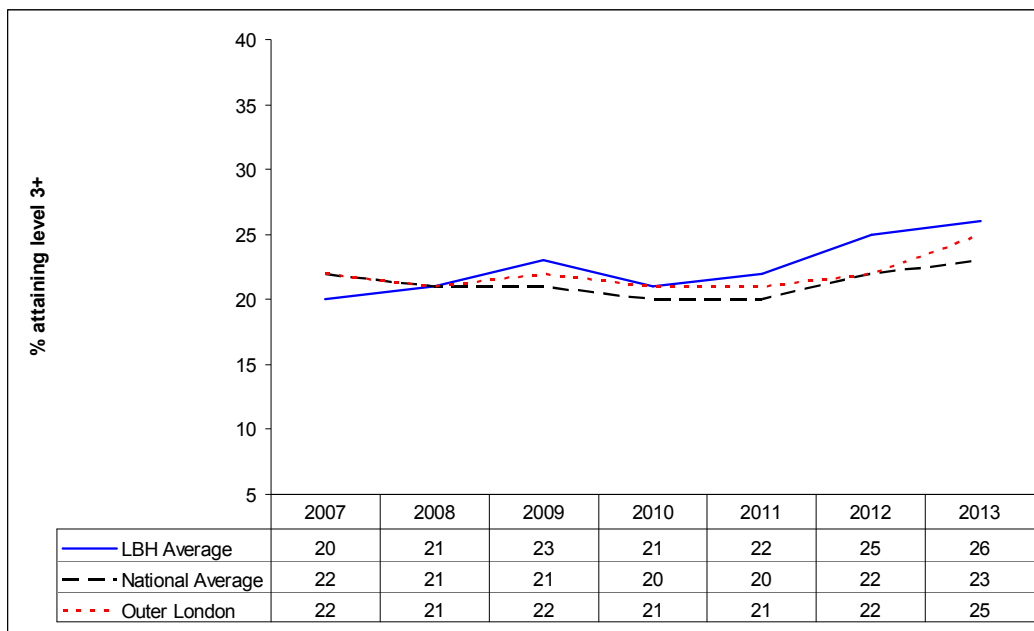
Mathematics

Chart 5: Percentage of Pupils attaining Level 2 or above in Key Stage 1 in Maths



30. Chart 5 shows the proportion of Borough pupils attaining level 2 or higher in Mathematics. This has increased by one point since 2012 and has now moved above the national average and equals the outer London average. Level 2B+ = increased from 78% in 2012 to 81% in 2013 – above both national (78%) and outer London averages (79%).

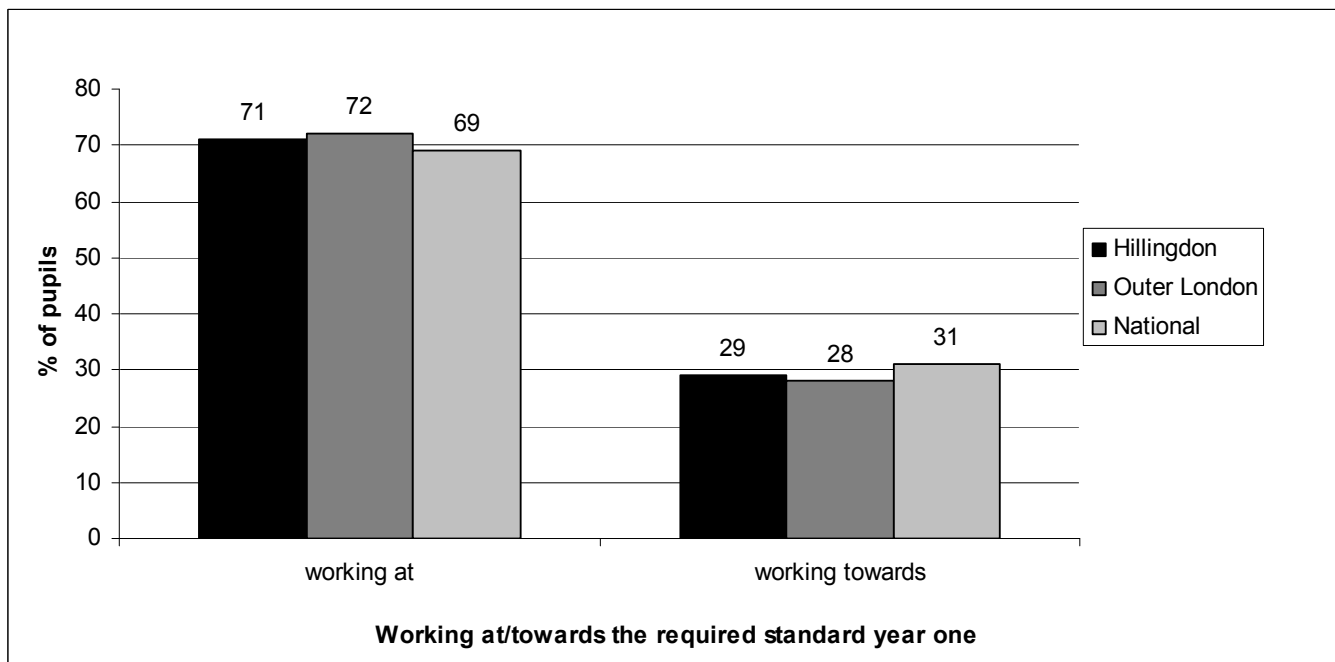
Chart 6: Percentage of Pupils attaining Level 3 or above in Key Stage 1 in Maths



31. Chart 6 shows the proportion of Hillingdon pupils attaining level 3 or above in Mathematics at the end of Key Stage 1. This is higher than last year and remains above both national and outer London averages.

Year 1 and Year 2 Phonics Screening Check results

Table 2 – Pupils working at the required standard for the Phonics Screening Check



32. The phonics screening check is now in its second year. Data is available for both Year 1 and Year 2. It is a requirement that pupils who missed the required level should undertake the check again in Year 2.
33. The required standard is 31 words out of 40 (see explanation in paragraph 9) above, pupils are then banded as working at the required standard or working towards the required standard.
34. Table 2 above shows the number of pupils working at desired phonics outcome, 71% of pupils within Hillingdon are working at the desired level for phonics. This is a substantial improvement on the 57% recorded in 2012. It is now above the national average but slightly below the outer London average.
35. 2013 was the first year that pupils were required to retake the screening check if working below the required standard in 2012. Results for Hillingdon pupils were 68% which is in line with the national average.

Key Stage 2

The Key Stage 2 tests were changed in 2013. The English test was replaced by Reading, Writing and Grammar, Punctuation and Spelling (GPS). As this is the first year it is not possible to compare the results with previous years. Table 3 below summarises the key results for 2013:

Table 3

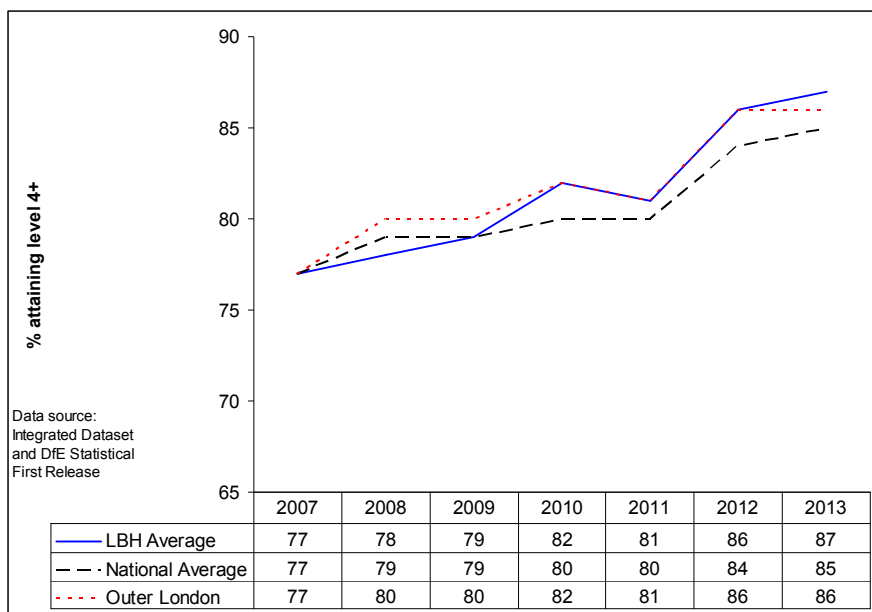
	LEVEL	HILLINGDON	NATIONAL	OUTER LONDON
READING	4+	87	86	86
READING	4B+	76	75	76
READING	5+	43	45	45
WRITING (TA*)	4+	84	83	84
WRITING (TA*)	5+	29	30	32
GPS	4+	78	73	78
GPS	4B+	70	64	70
GPS	5+	53	47	54

(*TA refers to teachers' assessment of writing)

At the Level 4 stages Hillingdon tends to be above the national average and level with or just above outer London averages. There is a need to focus now on Level 5+ for Reading and Writing Categories where Hillingdon is behind in comparison to both national and outer London averages.

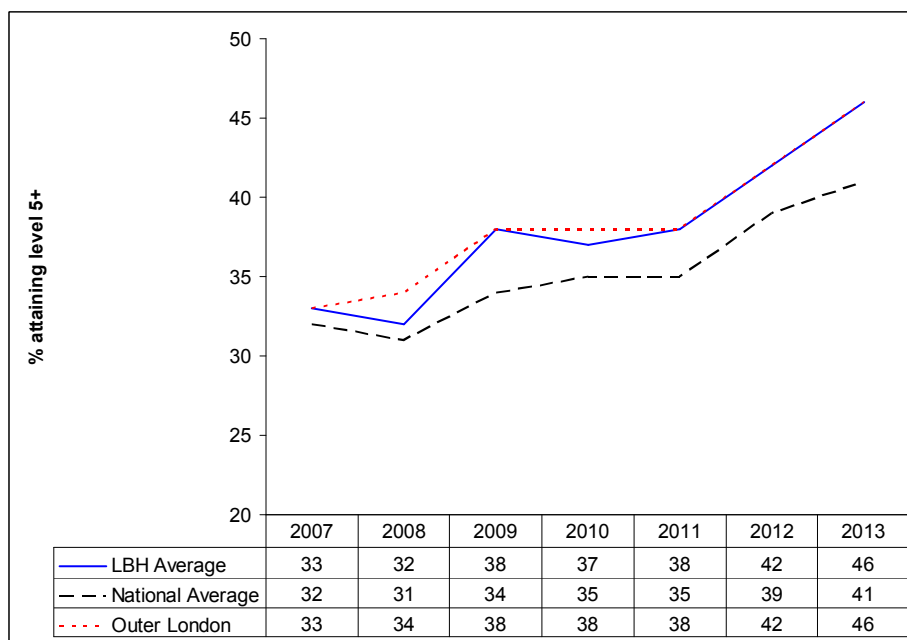
Mathematics

Chart 7: Percentage of Pupils attaining Level 4 or above in Key Stage 2 in Maths



36. Chart 7 shows the proportion of Borough pupils attaining level 4 or above in Key Stage 2 Mathematics. Results for 2013 one point higher than in 2012. Hillingdon is slightly above both national and outer London averages.

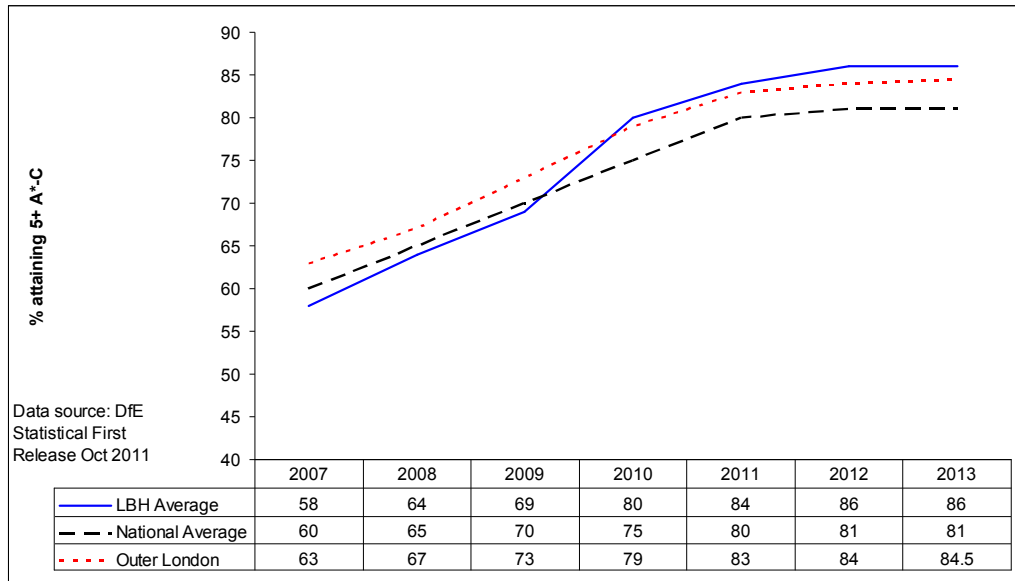
Chart 8: Percentage of Pupils attaining Level 5 or above in Key Stage 2 in Maths



37. Chart 8 shows the proportion of Borough pupils attaining level 5 or above in Key Stage 2 Mathematics. Results for 2013 are 4 points higher than in 2012 – the second year in a row to show a 4 point improvement. Hillingdon is above the national average and in line with Outer London.

Key Stage 4

Chart 9: Percentage of Pupils attaining at least 5+ A*-C Grades

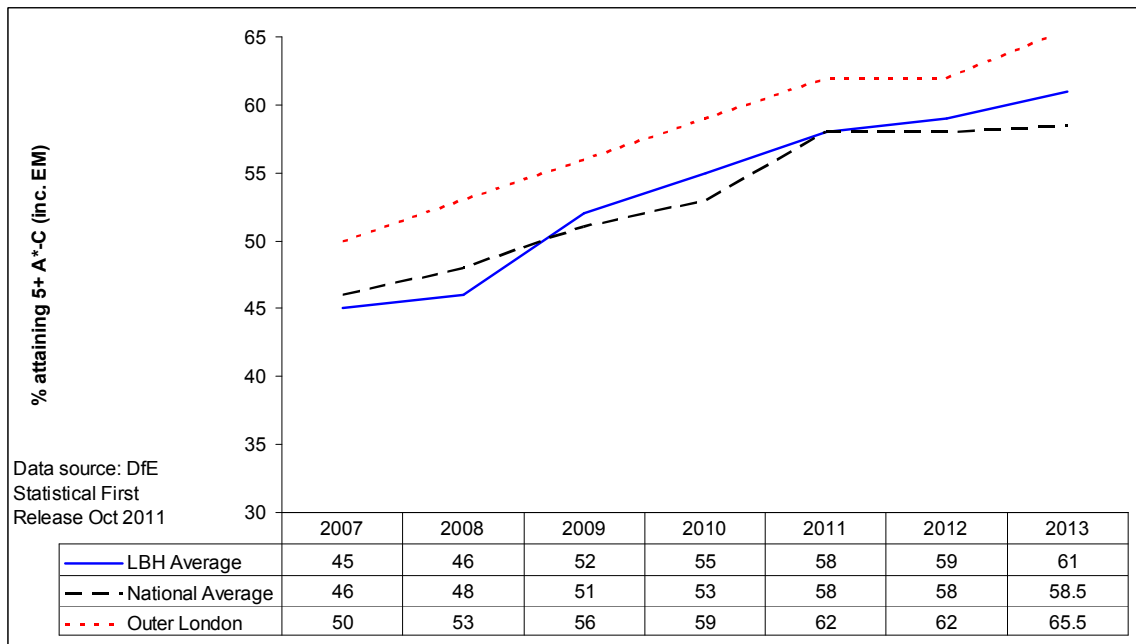


5+ A*-C Grades

38. Chart 9 shows the percentage pupils in Hillingdon schools attaining 5 or more GCSEs at grades A* - C in all subjects remains above both the national level and outer London levels.

5+ A*-C Grades (Including English and Mathematics)

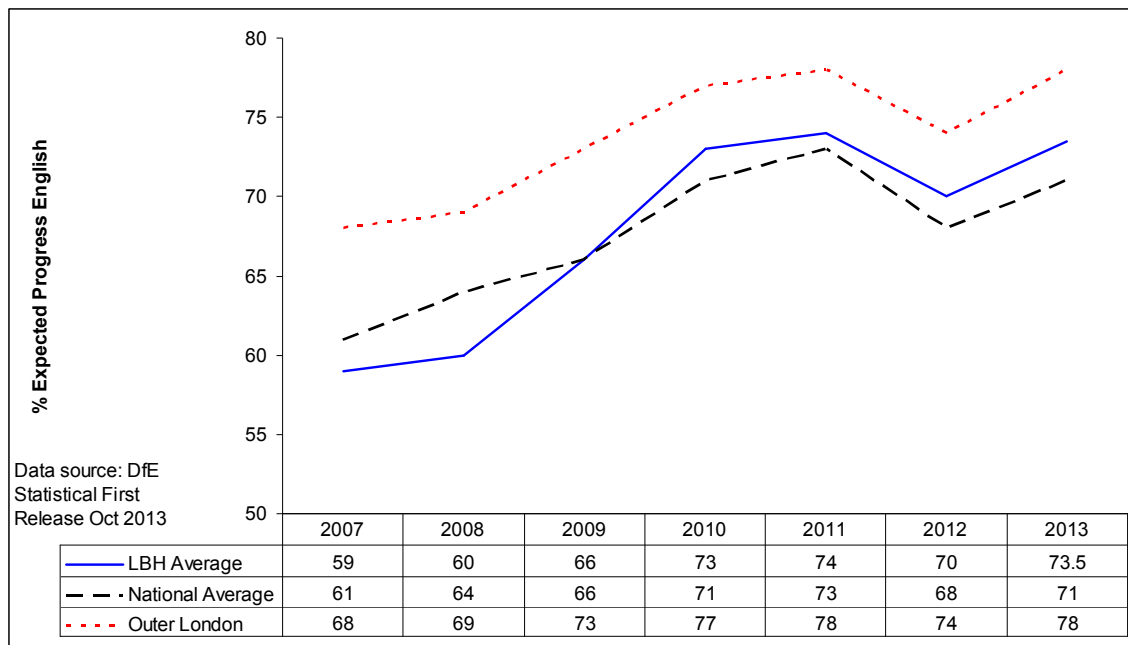
Chart 10: Percentage of Pupils attaining at least 5+ A*-C Grades (including English and Mathematics)



39. Chart 10 shows the percentage of Borough pupils attaining 5 or more GCSEs at grades A* - C (including English and Mathematics) has improved by 2 percentage points on 2012 and is currently over 2 percentage points higher than the national figure. However, Hillingdon is below the outer London average which is improving at an even faster rate.

Expected Progress English

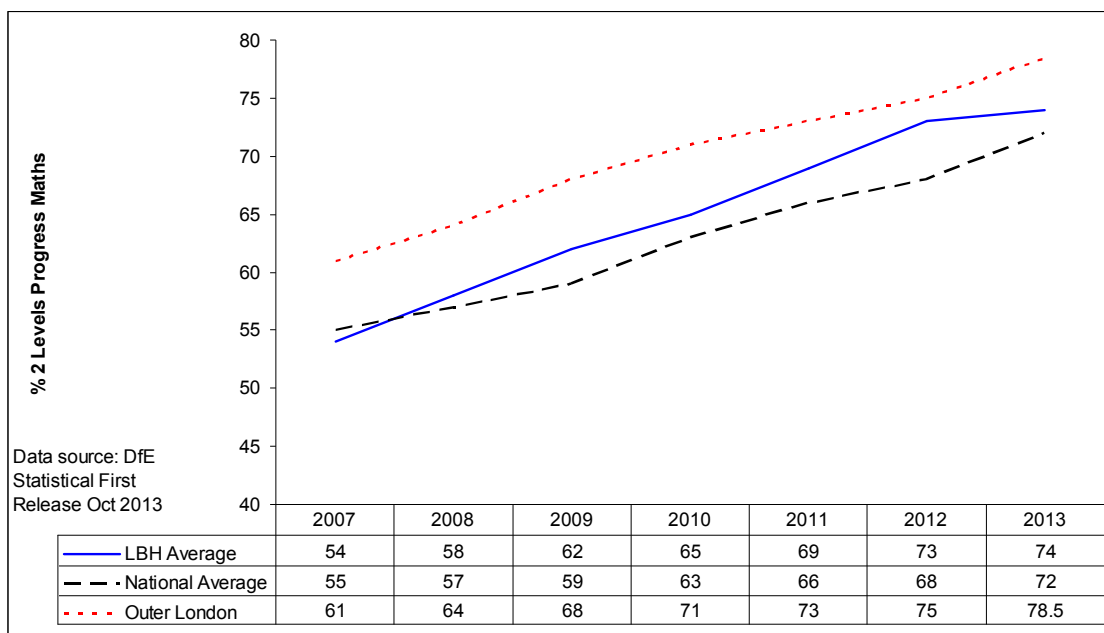
Chart 11: Percentage of pupils making expected progress in English



40. Chart 11 shows the proportion of Borough pupils making at least 3 levels progress in English has increased; this is in line with results nation wide. Although Hillingdon are above the national average, results are substantially down on the outer London average.

Expected Progress Mathematics

Chart 12: Percentage of pupils making expected progress in mathematics



41. Chart 12 shows the proportion of pupils making the expected progress between KS2 and KS4 in Mathematics has increased by 1 percentage point since 2012. Although Hillingdon are above the national average, results are substantially down on the outer London average.

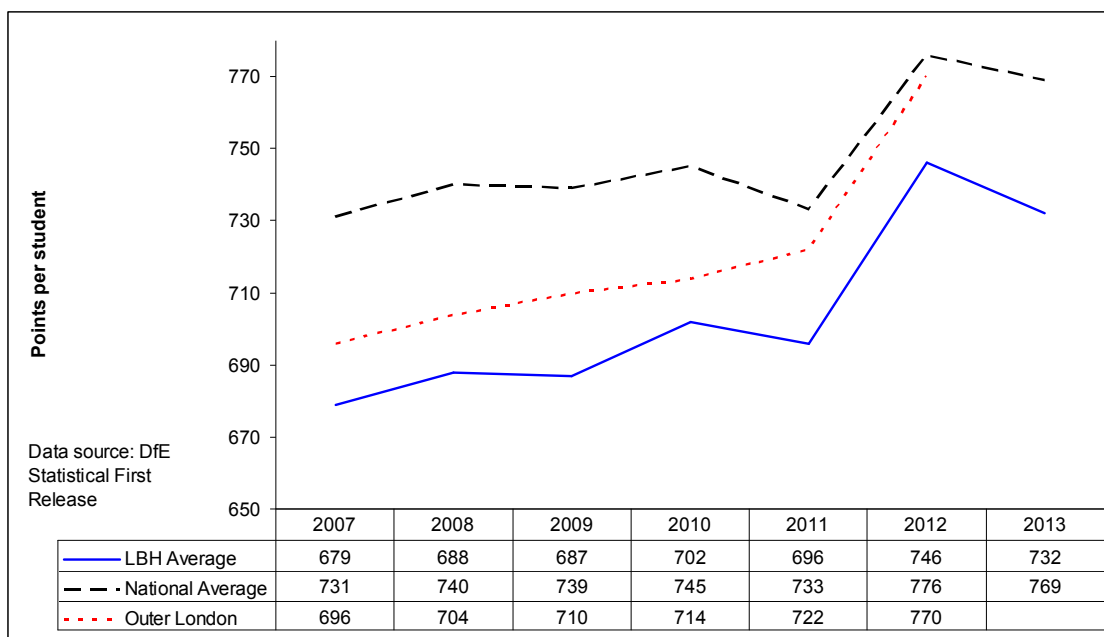
Key Stage 5

There are two main national indicators of performance at Key Stage 5.

1. The average point score per student (based on cumulative performance in GCSE/ A/AS and key skills examinations – usually over 2 years). See Chart 13.
2. The average point score per examination entry (based on cumulative performance in GCSE/A/AS and key skills examinations – usually over 2 years). See Chart 14.

Average points score per student

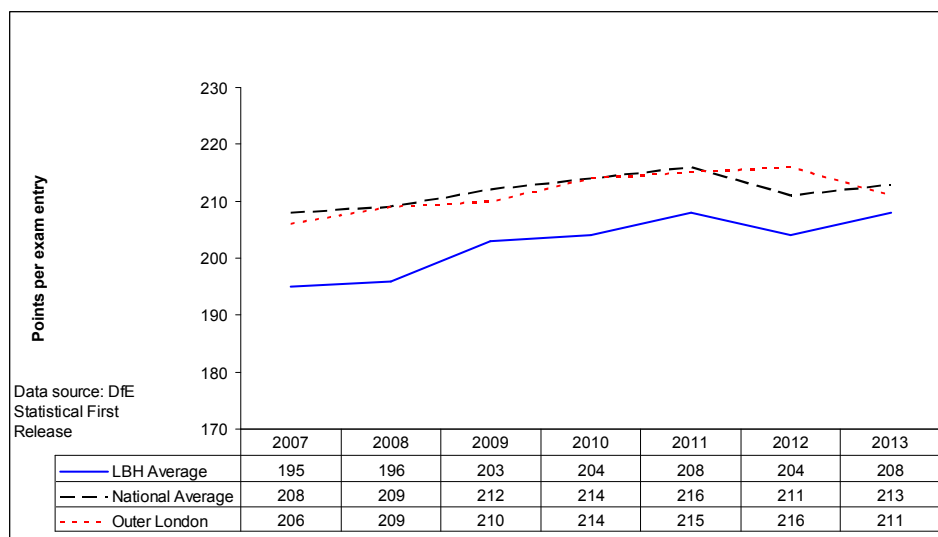
Chart 13: Average Point Score per student



42. Chart 13 shows the average points per student decreased both in Hillingdon, and nationally. Hillingdon results remain lower than the national average. Outer London results currently not available.

Average points score per examination entry

Chart 14: Average Point Score per entry



43. Chart 14 shows the average point per entry improved slightly as did the national average, outer London dropped. Hillingdon remains behind both.

Performance of Pupil Groups

44. The focus in the tables below is for pupils with SEN or those eligible for Free School Meals, this information is taken from Fischer Family Trust (FFT) Value Added (VA) reports. The report shows the attainment of these groups over the last three years, it then shows whether there has been a significant change in the results, taking into account the last 3 years of data. The following abbreviations are used: SEN (Special Educational Needs), A (Action), P (Action Plus), S (Statement), and FSM (eligible for Free School Meal).

Key Stage 1

Table 4: Key Stage 1 Reading by pupil group

Group	% Attaining Level 2+ (with number of pupils in brackets)			FFT VA (Contextual) 2010-2013
	10/11	11/12	12/13	
SEN - A	68.2% (539)	68.2% (456)	77.2% (425)	-2.3%
SEN - P	52.6% (181)	63.4% (217)	70.6% (381)	-6.0 sig
SEN - S	29.3% (90)	19.8% (84)	30.9% (81)	-3.0%
FSM	78.3% (624)	82.1% (689)	84.5% (652)	-0.1%

Table 5: Key Stage 1 Writing by pupil group

Group	% Attaining Level 2+ (with number of pupils in brackets)			FFT VA (Contextual) 2010-2013
	10/11	11/12	12/13	
SEN - A	52.5% (539)	53.7% (456)	61.9% (425)	-10.5% sig
SEN - P	40.9% (181)	46.0% (217)	58.4% (381)	-13.0% sig
SEN - S	15.9% (90)	9.9% (84)	22.2% (81)	-9.1% sig
FSM	71.7% (624)	74.3% (689)	74.5% (652)	-3.4% sig

Table 6: Key Stage 1 Mathematics by pupil group

Group	% Attaining Level 2+ (with number of pupils in brackets)			FFT VA (Contextual) 2010-2013
	10/11	11/12	12/13	
SEN - A	71.9% (539)	78.1% (456)	81.4% (425)	-3.8% sig
SEN - P	63.2% (181)	70.4% (217)	72.7% (238)	-7.2% sig
SEN - S	22.0% (90)	30.9% (84)	37.0% (81)	-4.7% sig
FSM	82.1% (624)	87.9% (689)	87.0% (652)	-0.6%

Key Stage 2

45. The information in these tables is based on pupils with both KS1 and KS2 results.

Table 7: Key Stage 2 Mathematics by pupil group

Group	% Attaining Level 4+ (with number of pupils in brackets)			FFT VA 2010-2013
	10/11	11/12	12/13	
SEN - A	57.7% (446)	67.3% (445)	67.5% (369)	-4.5% sig
SEN - P	57.9% (178)	56.0% (191)	56.1% (187)	-6.9% sig
SEN - S	9.5% (94)	15.7% (83)	28.4% (102)	-8.9% sig
FSM	67.5% (577)	78.9% (541)	74.7% (529)	-1.6%

46. The proportion of pupils performing at level 4+ was higher than in 2012 for all groups other than those with FSM.

Key Stage 4

The information in these tables is based on pupils with both KS2 and KS4 results.

Table 8: Key Stage 4 5+ A*-C Grades - All Subjects

Group	% 5+ A*-C (with number of pupils in brackets)			FFT VA (from KS2) 2010-2013
	10/11	11/12	12/13	
SEN - A	76.8% (384)	82.9% (541)	69.3% (313)	+6.3% sig
SEN - P	52.1% (194)	58.9% (236)	68.4% (158)	-6.9% sig
SEN - S	29.2% (89)	19.5% (89)	30.1% (113)	-1.4%
FSM	72.9% (457)	78.4% (457)	77.7% (555)	+4% sig

47. The performance of pupils SEN P or statemented made significant progress although SEN A dropped.

Table 9: Key Stage 4 5+ A*-C Grades (including English and Maths)

Group	% 5+ A*-C including English & Maths (with number of pupils in brackets)			FFT VA (from KS2) 2010-2013
	10/11	11/12	12/13	
SEN - A	37.0% (384)	36.6% (541)	28.8% (313)	-1.5%
SEN - P	20.1% (194)	18.4% (236)	24.1% (158)	-12.0% sig
SEN - S	3.4% (89)	7.3% (89)	9.7% (113)	-0.6%
FSM	41.3% (457)	46.4% (457)	45.6% (555)	+1.7%

48. The progress of children with SEN Action was significantly below expectation, however those with SEN Action Plus and Statemented showed improvements.

Looked After Children

1. About the Looked After Children (LAC) Population:

Current statutory school age LAC population (as at 19.10.13)	172
Total number of statutory school age children worked with during the academic year 2012-13	262

Distribution:

Number of statutory school age LAC educated within Hillingdon (as at 19.10.13)	99 55.9%
Number of statutory school age LAC educated outside Hillingdon (as at 19.10.13)	78 44.1%
Number of 17 and 18 year old LAC (as at 19.10.13)	142
Non-Hillingdon LAC educated within Hillingdon (as at 19.10.13)	152

LAC with Statements of SEN*

Number of LAC aged 5- 18 with a Statement of SEN	%of LAC aged 5-18 with a Statement of SEN	Educated in Borough	Educated outside the Borough
58	17.9%	22	36

Categories of SEN *

BESD	LD	ASD	SLD	PMLD	VI
30	18	5	3	1	1

* BESD = Behaviour, emotional and social difficulty LD = Learning difficulty ASD = Autistic spectrum disorder SLD = Severe learning difficulty PMLD = Profound and multiple learning difficulties VI = visually impaired

2. Education data for LAC - Key Stage 2 attainment

Key Stage 2 Attainment - for children who have been looked after continuously for at least 12 months at 31st March 2013

2012-13	KS2 - Percentage achieving at least Level 4 in the following							
	Mathematics (Test)		Reading (Test)		Writing (Teacher Assessment)		Grammar, Punctuation & Spelling (Test)	
	National	Hillingdon	National	Hillingdon	National	Hillingdon	National	Hillingdon
	59	58 (7 pupils)	63	42 (5 pupils)	55	33 (4 pupils)	45	33 (4 pupils)

49. Number of Hillingdon LAC in cohort at end of KS2 = 12 (5 boys and 7 girls). 2 girls were either unable to access the test and tasks or operating below the level of the tests and 3 of the 5 boys in this cohort are UASC*.

50. Due to changes to the KS2 examinations it isn't possible as yet to make comparisons to previous years' results.

* *Unaccompanied Asylum Seeker Children*

Key Stage 4 Attainment - for children who have been looked after continuously for at least 12 months at 31st March 2013

2012-13		National	Hillingdon
	A* - C in English and Mathematics	16.1%	12.8%
	5 + GCSEs A* - C including English and Mathematics GCSEs	15.3%	10.3%
	5 + GCSE's A* - C or equivalent – all subjects	36.6%	15.3%

51. Cohort of 41 pupils in care for 12 months of whom 14 are statemented (11 educated outside the Borough and 3 within Hillingdon).

52.2 LAC in Year 11 are not included in this data as they were disapplied from the tests due to their level of SEN (1 severe ASD, 1 SLD)

53. Reportable data therefore available for 39 pupils.

Of the 39:	Number of Pupils	%of Pupils
How many indigenous children?	26	67%
How many are UAS/C have ESOL?	13	33%
How many have a Statement of SEN	12 (All of whom are indigenous)	31%
How many are male?	29	74%
How many are female?	10	26%
How many are educated outside the Borough?	25	64%
How many are educated inside the Borough?	14	36%

Reportable KS4 data – 39 pupils	Actual number of pupils achieving at this level	Cumulative total of pupils achieving at this level
Achieved 5 GCSE's at A*- C or equivalent including English and Maths	4	4
Achieved 5 GCSE's at A*- C or equivalent	12	6
Achieved 5 GCSE's at A*- G or equivalent	14	20
Achieved 1 GCSE or equivalent	10	30

Sat 1 GCSE or equivalent	10	30
Did not take any GCSE or equivalent exams.	9	39

Hillingdon Adult Learning Service

This service is publicly-funded through external contracts with the Skills Funding Agency (SFA) for adults over the age of 19, and the Education Funding Agency (EFA) for young people aged between 16 and 19. There is additional funding from the local authority.

The service delivers opportunities for adults to learn new skills which match both the Department of Business, Innovation and Skills priorities and those of London Borough of Hillingdon.

Key performance indicators are monitored annually by the SFA and the service is subject to Ofsted inspections. The quality of the provision has an impact on subsequent funding levels from the SFA and the EFA and the service's 'Good' Ofsted grade has enabled it to attract funding for additional learning opportunities to the benefit of residents.

Headline data for 2012-13

Success rates

Key Performance Indicator	2010/11	2011/12	2012/13	% Change 11/12 to 12/13	% Change 10/11 to 11/12	% Change 10/11 to 12/13
Success Rates	86%	88%	89%	+1%	+2%	+3%
<i>of which:</i>						
Long Courses	83%	85%	88%	+3%	+2%	+5%
Short Courses	87%	88%	89%	+1%	+1%	+2%
<i>by funding stream:</i>						
Classroom-Based	81%	84%	87%	+3%	+3%	+6%
Community / Other	88%	90%	89%	-1%	+2%	+1%

Hillingdon Adult & Community Learning comparison to sector averages	2010/11	2011/12	2012/13 Comparison to 2011/12 Benchmarks	2011/12 Comparison to 2011/12 Benchmarks	2010/11 Comparison to 2010/11 Benchmarks
Community Sector Benchmark	82.6%	80.4%	+8%	+7%	+3%
Former EI Benchmark	76.5%	78.7%	+9%	+6%	+6%
Non-Accredited (ASL Benchmark)	84.6%	88.1%	+1%	0%	+2%

Achievement and retention (component parts of overall Success rates)

	2011/12	2011/12	2012/13
Success Rates	86%	88%	89%
Achievement Rate %	93%	94%	95%
Retention Rate %	93%	93%	93%

Quality of Provision 2012-13

Every year the service carries out a robust self assessment review (SAR) to evaluate the quality and effectiveness of the provision we offer to residents and to identify areas for improvement. The judgements we make are measured against the Ofsted Common Inspection Framework that is used across education as a whole and the findings are listed below:

Category	Grade awarded
Overall effectiveness	2
Outcomes for learners	2
Quality of provision	2
Leadership and management	2
Subject areas	
Early Years and Childcare	1
Agriculture and Horticulture	2
ICT	2
Arts, Media and Publishing	2
Modern Foreign Languages	2
Life and Employment Skills, including Employability; provision for Adults with Learning Difficulties and Disabilities; Family English, Maths and Language, and Wider Family Learning.	2

Grade 1-Outstanding; Grade 2-Good; Grade 3-Needs Improvement; Grade 4-Inadequate

Financial Implications

There are no financial implications arising from this report

EFFECT ON RESIDENTS, SERVICE USERS & COMMUNITIES

What will be the effect of the recommendation?

Better informed education provision for children in Borough schools and other educational establishments

Consultation Carried Out or Required

None required as the report is a summary of attainment and inspection evidence

CORPORATE IMPLICATIONS

Corporate Finance

Corporate Finance concurs with the financial implications above.

Legal

This report sets out in some detail the high standards and quality of education in Hillingdon schools. Cabinet are being asked to note the report and as such, there are no specific legal implications arising from it

Relevant Service Groups

NIL