



Shaping a
healthier
future

NWL Monthly Maternity Transition & Quality Dashboard

September 2015

Transition and Quality Dashboards

- The metrics for this dashboard to monitor the transition of Maternity services from Ealing Hospital have been agreed in consultation with relevant clinical leads.
- The purpose of the dashboard is primarily to monitor key quality metrics to be able to monitor any changes post transfer and develop any mitigating actions required.
- A secondary purpose is to monitor capacity and demand to quickly identify issues in the system, and support the creation of mitigating actions to ensure safe operations of our services across NWL.
- Trust information teams submit monthly data returns to the programme on the 1st Tuesday of every month
- The dashboards are created and submitted to the programme boards and Ealing Quality Committee to review and if necessary formulate mitigating actions,

Programme Boards	Frequency	Submitted for Information	Submitted for Review and Action
Programme Executive	Weekly	✓	
Clinical Board	Monthly		✓
Implementation Programme Board	Monthly	✓	
Ealing Quality Committee	Monthly		✓
Ealing Governing Body	Monthly	✓	
NWL CCGs Quality Committees	Monthly	✓	

Transition and Quality Dashboards - Metrics

Metrics - Maternity (Monthly)	
Demand	Deliveries (Births)
	Deliveries (Births) by women from Ealing postcodes
	Births in MLU
	Births at Home
	Births at Labour Ward
	Bookings
	Bookings by women from Ealing postcodes
	NICU cot days
Capacity	Midwifery vacancy rate
	Maternity support vacancy rate
	Neonatal nurses vacancy rate
	Consultant vacancy rate
	Middle Grade (training & non-training) OG vacancy rate
	Consultant (Anaesthetic) vacancy rate
Sonographer vacancy rate	
Quality	Maternity Serious Untoward Incidents
	Midwifery to birth ratio
	1:1 midwifery labour care
	12+6 weeks booking rate (exc. late referrals; i.e. after 10+6 weeks)
	Consultant cover on labour wards (hours)
	Elective C-Sections
	Emergency C-Sections
	Average Friends and Family Test score
	Number of complaints
	Number Born Before Arrival
	Unbooked deliveries
	Attrition Rate (Bookings to Deliveries)
	Breastfeeding initiation rate
	% of women with Post Partum Haemorrhage (> 1,500mls)
	% of instrumental deliveries
% of Puerperal Sepsis	
Resilience	Number of Temporary Closures
	Women getting first choice unit
	Number of first choice bookings turned away

Metrics - Maternity (Weekly)	
Demand & Quality	Deliveries (Births)
	Deliveries (Births) by women from Ealing postcodes
	Bookings
	Bookings by women from Ealing postcodes
	Women getting first choice unit
	Number of first choice bookings turned away

Metrics - Neo Natal (Monthly)	
Demand & Quality	In Utero Transfer within NWL
	In Utero Transfer to another Network
	Post natal Transfer within NWL (Medical & Surgical)
	Post natal Transfer to another Network (Medical & Surgical)





NWL Overview

Monthly Maternity Transition & Quality Dashboard

NWL

Measure	Baseline	Jul	Aug	Sep	Current relative to baseline
Midwifery to birth ratio	31	33	31	30	⬆️
1:1 midwifery labour care	96%	93%	93%	94%	◆
Consultant cover on labour wards (hours)	108	110	114	116	⬆️
12+6 week bookings rate	93%	96%	97%	95%	◆
Proportion Elective C-Sections	11.6%	13.3%	11.9%	11.8%	◆
Proportion Emergency C-Sections	15.0%	15.0%	15.1%	14.8%	◆
Proportion Instrumental deliveries	15.6%	13.6%	15.5%	14.7%	⬆️
Proportion with Post Partum Haemorrhage (> 1500 mls)	1.5%	3.0%	2.5%	2.3%	⬇️
Proportion with Puerperal Sepsis	1.2%	1.1%	1.4%	0.8%	⬆️
Born before arrival	15	14	21	15	◆
Unbooked deliveries	10	25	21	13	⬇️
SUIs	9	5	4	3	⬆️
Complaints	11	8	5	4	⬆️

- Three months into transition and the majority of quality indicators show improvement or consistency.
- Midwife to birth ratio – has improved across NWL and specifically at Chelsea & Westminster and West Middlesex.
- Consultant cover – this has improved as a direct consequence of the transition.
- 12+6 booking rate has improved or remained above target at all trusts except Northwick Park.
- Post partum haemorrhage – a change in definition has led to a reported increase in this indicator rather than the increase indicating clinical deterioration. This will be closely monitored going forward to ensure the definition change is not disguising true performance change.
- Unbooked deliveries initially increased as HOMs agreed to accept all women who presented at their units irrespective of where women were booked to deliver. The rate has now reduced.

St Mary's

Measure	Baseline	Jul	Aug	Sep	Current relative to baseline
Midwifery to birth ratio	33	33	30		◆
1:1 midwifery labour care			84%	91%	◆
Consultant cover on labour wards (hours)		98	98	98	◆
12+6 week bookings rate	88%	96%	96%	94%	⬆️
Proportion Elective C-Sections	10.6%	14.0%	12.0%	10.0%	⬆️
Proportion Emergency C-Sections	17.7%	15.0%	20.0%	19.0%	⬇️
Proportion Instrumental deliveries	12.1%	8.0%	13.0%	13.0%	⬇️
Proportion with Post Partum Haemorrhage (> 1500 mls)	0.2%	3.0%	2.6%	1.0%	⬇️
Proportion with Puerperal Sepsis	1.9%	0.2%	1.0%		◆
Born before arrival	Not reported				
Unbooked deliveries					
SUIs					
Complaints					

Queen Charlotte's

Measure	Baseline	Jul	Aug	Sep	Current relative to baseline
Midwifery to birth ratio	33	33	30		◆
1:1 midwifery labour care		81%	84%	87%	◆
Consultant cover on labour wards (hours)		98	98	98	◆
12+6 week bookings rate	94%	95%	98%	95%	◆
Proportion Elective C-Sections	12.3%	13.0%	11.0%	12.0%	◆
Proportion Emergency C-Sections	14.8%	16.0%	11.0%	11.0%	⬆️
Proportion Instrumental deliveries	18.9%	15.0%	15.0%	16.0%	⬆️
Proportion with Post Partum Haemorrhage (> 1500 mls)	0.6%	3.0%	2.0%	2.6%	⬇️
Proportion with Puerperal Sepsis	1.1%	2.3%	0.8%		◆
Born before arrival	Not reported				
Unbooked deliveries					
SUIs					
Complaints					

The baseline period runs from 1 June 2014 through to 30 May 2015

Key:

Description:



Improvement > 2.5% in current month relative to baseline



No comparison possible or within 2.5% of baseline



A deterioration of greater than 2.5% from baseline

Northwick Park

Measure	Baseline	Jul	Aug	Sep	Current relative to baseline
Midwifery to birth ratio	24	29	27	25	⬇️
1:1 midwifery labour care	97%		98%		⬆️
Consultant cover on labour wards (hours)	98	98	98	98	⬆️
12+6 week bookings rate	97%	96%	98%	94%	⬇️
Proportion Elective C-Sections	10.9%	9.5%	10.7%	10.3%	⬆️
Proportion Emergency C-Sections	7.7%	7.3%	7.3%	6.0%	⬆️
Proportion Instrumental deliveries	13.0%	11.6%	10.9%	11.5%	⬆️
Proportion with Post Partum Haemorrhage (> 1500 mls)	1.9%	1.9%	0.9%	2.4%	⬇️
Proportion with Puerperal Sepsis	0.7%	0.4%	1.6%	1.0%	⬇️
Born before arrival	3	1	7	3	⬆️
Unbooked deliveries	1	3	0	0	⬆️
SUIs	2	0	0		⬆️
Complaints	Not reported				

West Mid

Measure	Baseline	Jul	Aug	Sep	Current relative to baseline
Midwifery to birth ratio	35	32	33	32	⬆️
1:1 midwifery labour care	94%	98%	97%	96%	⬆️
Consultant cover on labour wards (hours)	144	144	164	164	⬆️
12+6 week bookings rate	98%	99%	99%	98%	⬆️
Proportion Elective C-Sections	10.2%	10.5%	12.6%	10.3%	⬆️
Proportion Emergency C-Sections	15.3%	19.9%	17.2%	18.9%	⬇️
Proportion Instrumental deliveries	14.7%	13.7%	14.4%	16.9%	⬇️
Proportion with Post Partum Haemorrhage (> 1500 mls)	1.5%	4.3%	3.7%	4.6%	⬇️
Proportion with Puerperal Sepsis	0.3%	0.4%	0.0%	0.0%	⬆️
Born before arrival	3	4	1	2	⬆️
Unbooked deliveries	1	2	0	0	⬆️
SUIs	2	0	1	1	⬆️
Complaints	3	4	4	2	⬆️

Hillingdon

Measure	Baseline	Jul	Aug	Sep	Current relative to baseline
Midwifery to birth ratio	31	34	32	32	⬇️
1:1 midwifery labour care	96%	97%	96%	95%	⬆️
Consultant cover on labour wards (hours)	96		112	118	⬆️
12+6 week bookings rate	97%	96%	98%	95%	⬆️
Proportion Elective C-Sections	10.2%	12.3%	8.7%	7.6%	⬆️
Proportion Emergency C-Sections	16.3%	16.2%	18.0%	18.0%	⬇️
Proportion Instrumental deliveries	17.4%	15.4%	18.1%	12.2%	⬆️
Proportion with Post Partum Haemorrhage (> 1500 mls)	2.0%	1.4%	2.6%	1.5%	⬆️
Proportion with Puerperal Sepsis	3.3%	3.3%	5.0%	2.5%	⬆️
Born before arrival	3	5	6	3	⬆️
Unbooked deliveries	3	12	14	7	⬇️
SUIs	2	2	0	0	⬆️
Complaints	3	4	1	2	⬆️

Chelsea & Westminster

Measure	Baseline	Jul	Aug	Sep	Current relative to baseline
Midwifery to birth ratio	33	36	37	30	⬆️
1:1 midwifery labour care	95%	95%	96%	99%	⬆️
Consultant cover on labour wards (hours)	110	110	110	115	⬆️
12+6 week bookings rate	93%	93%	94%	94%	⬆️
Proportion Elective C-Sections	15.1%	21.4%	16.3%	19.6%	⬇️
Proportion Emergency C-Sections	17.0%	16.1%	20.0%	16.9%	⬆️
Proportion Instrumental deliveries	19.4%	16.6%	21.2%	17.4%	⬆️
Proportion with Post Partum Haemorrhage (> 1500 mls)	3.2%	4.4%	3.5%	1.3%	⬆️
Proportion with Puerperal Sepsis	0.4%	0.0%	0.0%	0.0%	⬆️
Born before arrival	1	0	1	1	⬇️
Unbooked deliveries	1	1	1	2	⬇️
SUIs	3	3	3	2	⬆️
Complaints	2	0	0		⬆️

The baseline period runs from 1 June 2014 through to 30 May 2015

Key:

Description:



Improvement > 2.5% in current month relative to baseline



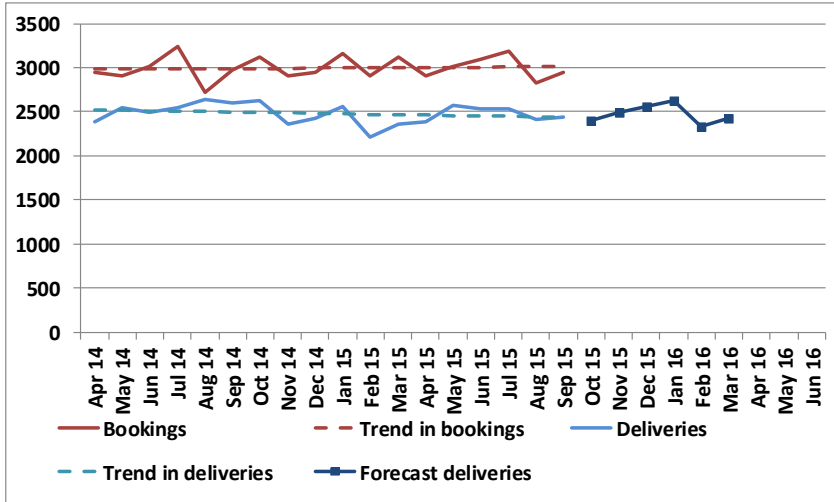
No comparison possible or within 2.5% of baseline



A deterioration of greater than 2.5% from baseline

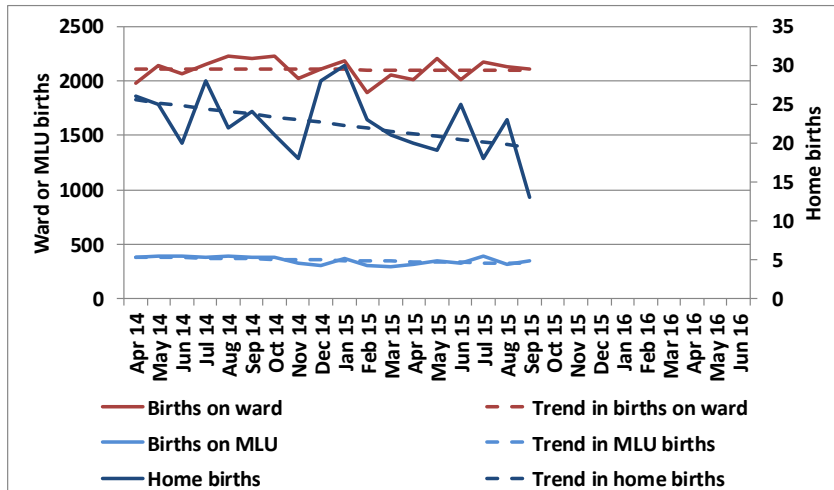
Demand Indicators:

Bookings and deliveries



The level of bookings and forecast deliveries remain comparable to the level reported in the previous year c.30,000 deliveries and c.36,000 bookings

Deliveries in MLU, Home and Labour Ward

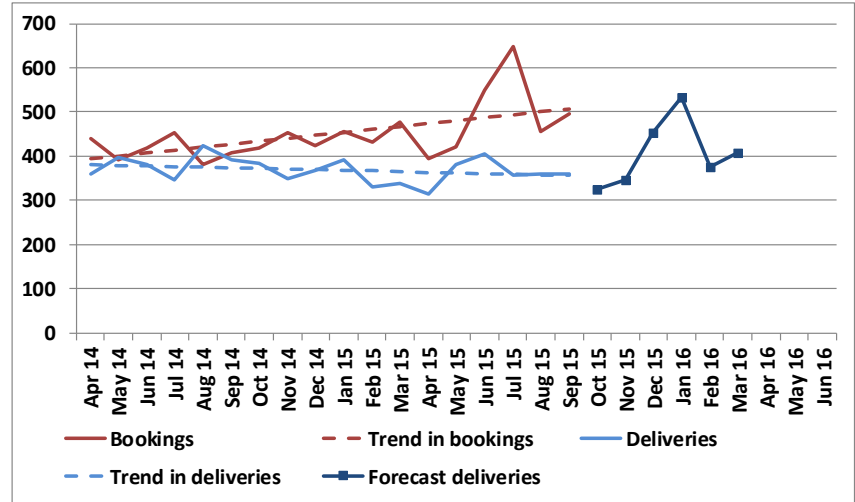


Deliveries in MLU, Home and Labour Wards remain relatively steady in the last year with 85% of deliveries in Labour Wards and 14% in MLU.

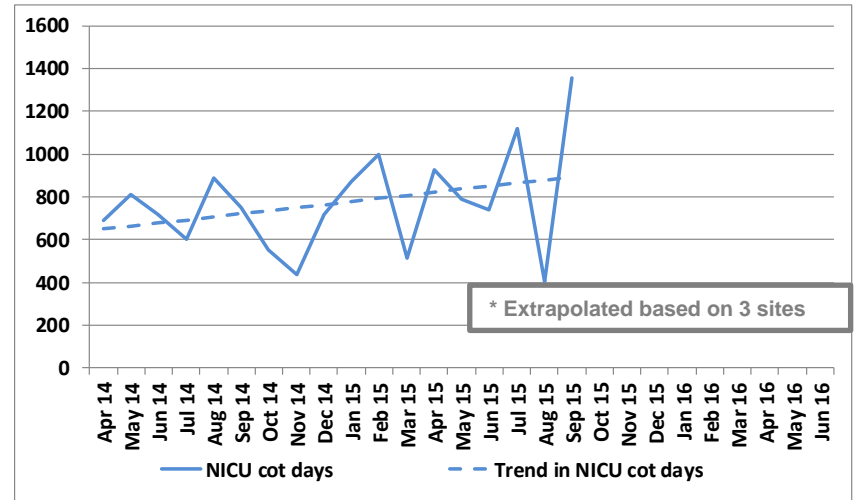
Source: Monthly trust dashboard returns

NWL - Data for September 2015

Bookings and deliveries originating from Ealing postcodes



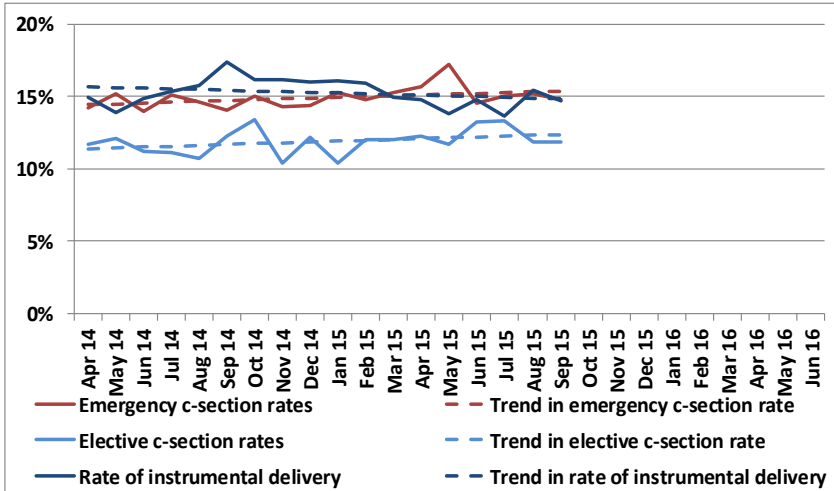
NICU cot days



NICU cot days are on an increasing trend averaging c.750 days over the last year. This month saw a large rise in NICU at Chel West.

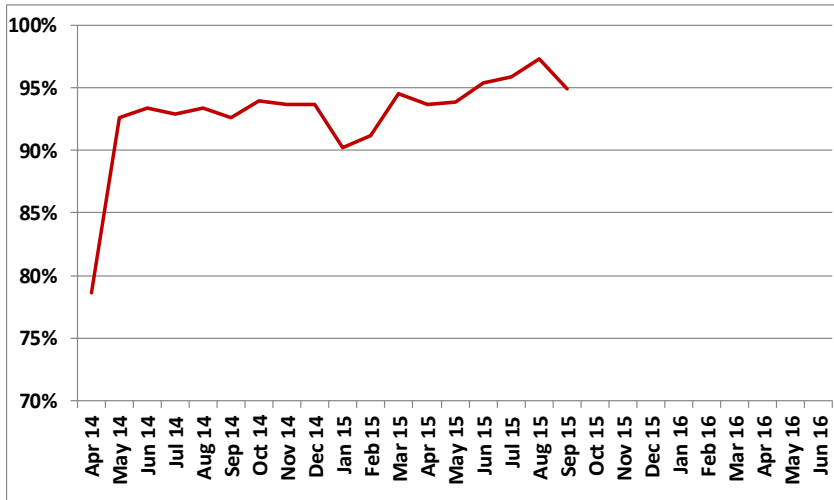
Pre - Transition NWL Quality Indicators:

Elective and emergency C-section / Instrumental deliveries



Emg. C-section, Elec. C-section and Instrumental deliveries have remained steady across NWL accounting for c.15%, c.12% and c.16% deliveries respectively.

12+6 weeks booking rate

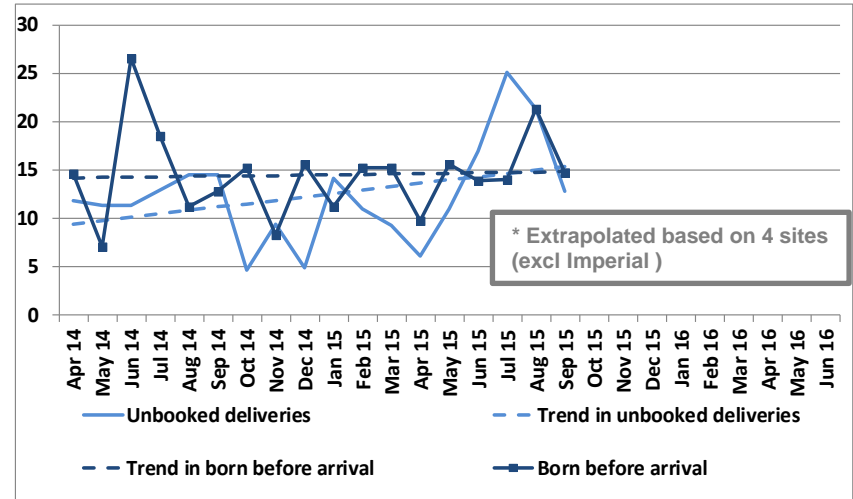


97% of bookings were within the 12+6 bookings window in August. There has been continual improvement in this indicator since January – need to check variance with last months report

Source: Monthly trust divisional data returns

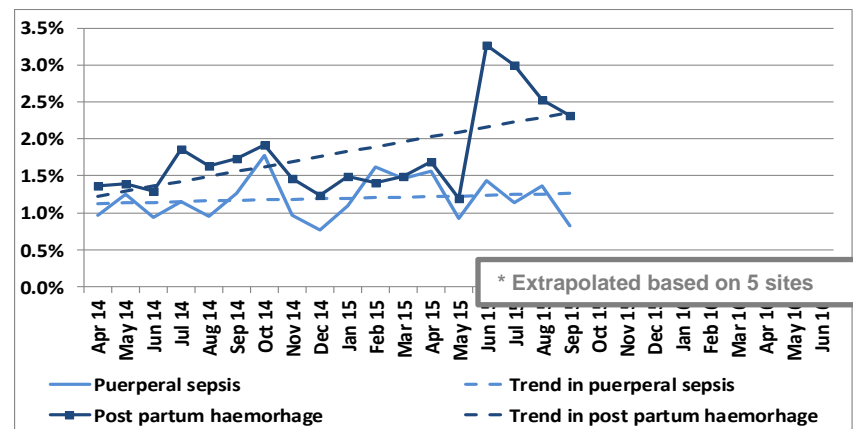
NWL - Data for September 2015

Supported deliveries



Unbooked deliveries decreased in September as the system stabilises following transition.

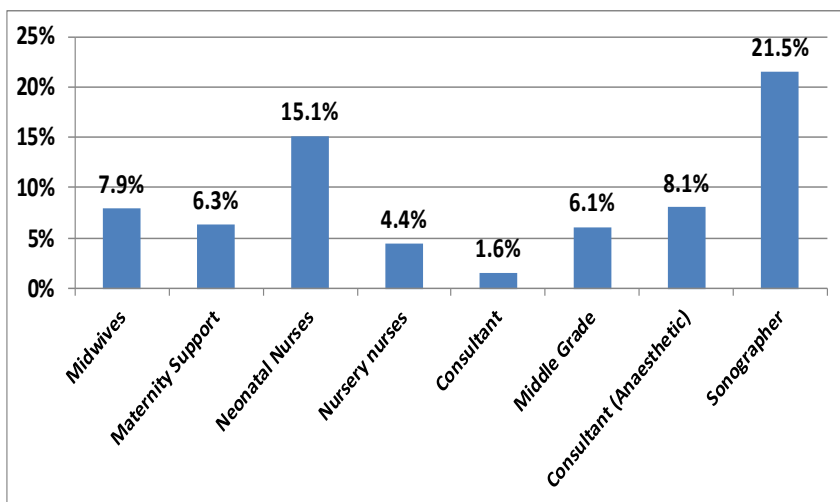
Post partum haemorrhage (> 1,500 mls) and puerperal sepsis



Puerperal sepsis remains low at c. 1% of total births across NWL. The definition for post partum haemorrhage has changed from April hence showing what could be interpreted as an increasing trend rather than the rebasing of the data. Since the definition change post partum haemorrhage has decreased.

Current hours of consultant cover on ward - 114 hrs

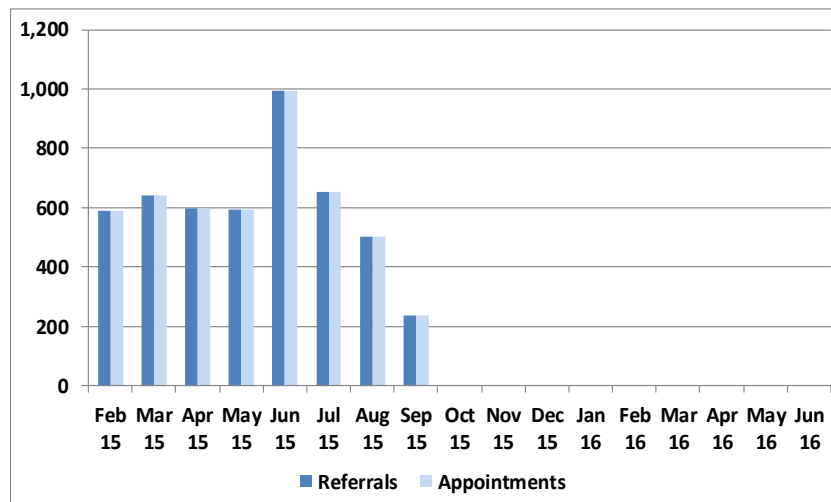
Staff vacancy rates – NWL w/e 20/8/2015



Consultant cover on wards has increased significantly since transition. All vacancy rates have remained relatively stable with marginal improvements in midwifery and sonography.

Source: Trust workforce returns w/e 12 June 2015

Referrals and appointments from Ealing CCG



Referrals increased markedly relative to historic volume in June during the transition. There is no MBS data

Source: Maternity Booking Service (MBS) data

			Jan 15	Feb 15	Mar 15	Apr 15	May 15	Jun 15	Jul 15	Aug 15	Sep 15	Oct 15	Nov 15	Dec 15
In Utero Transfer	Transfer within NWL	<i>appropriate</i>	0	0	2	0	2	0	0					
	Transfer within NWL	<i>capacity</i>	1	0	0	1	0	0	1					
	Transfer to another Network	<i>capacity</i>	3	1	0	2	1	0	0					
	Total transfers for capacity (out of network and within network for capacity)	<i>capacity</i>	4	1	0	3	1	0	1					
Post natal Transfer	Transfer within NWL	medical	10	13	5	16	4	9	9					
		surgical	8	6	6	9	12	6	7					
		Total transfers	18	19	11	25	16	15	16					
	Transfer to another network	medical	4	0	0	2	1	0	2					
		surgical	0	0	0	1	0	0	0					
		Total transfers out of network	4	0	0	3	1	0	2					

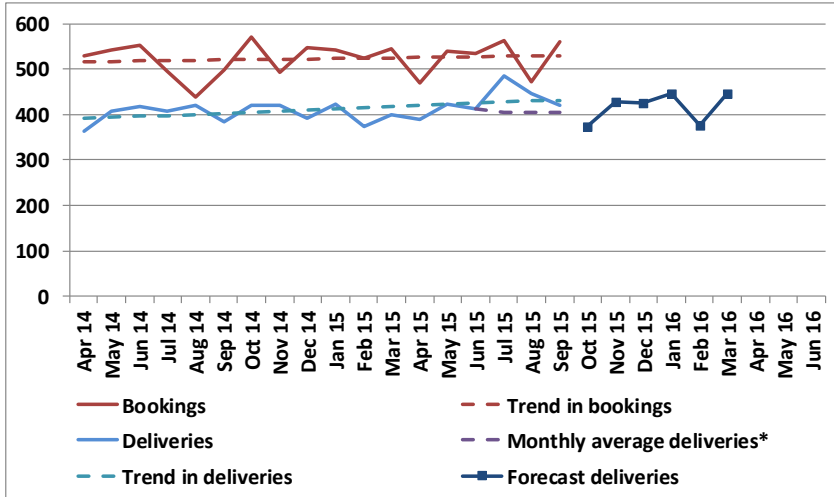


Northwick Park

Monthly Maternity Transition & Quality Dashboard

Demand Indicators:

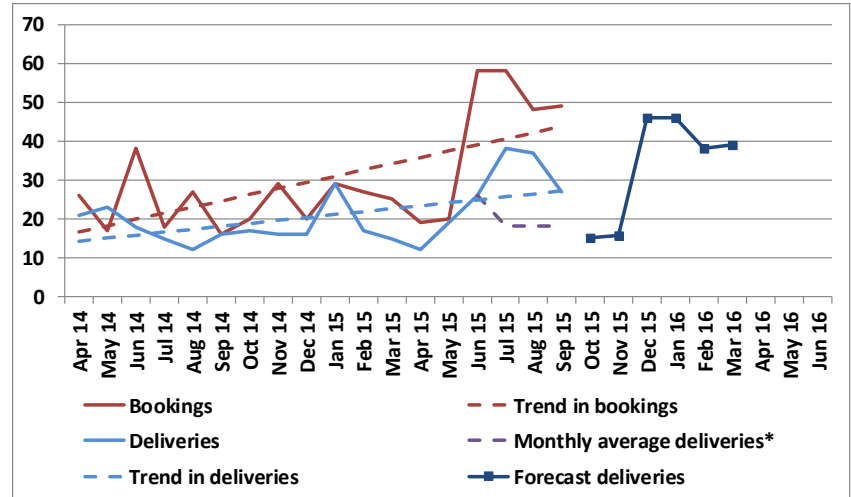
Bookings and deliveries



Deliveries and bookings have increased in recent months. The forecast deliveries based on bookings implies no overall change in the level of deliveries at the unit.

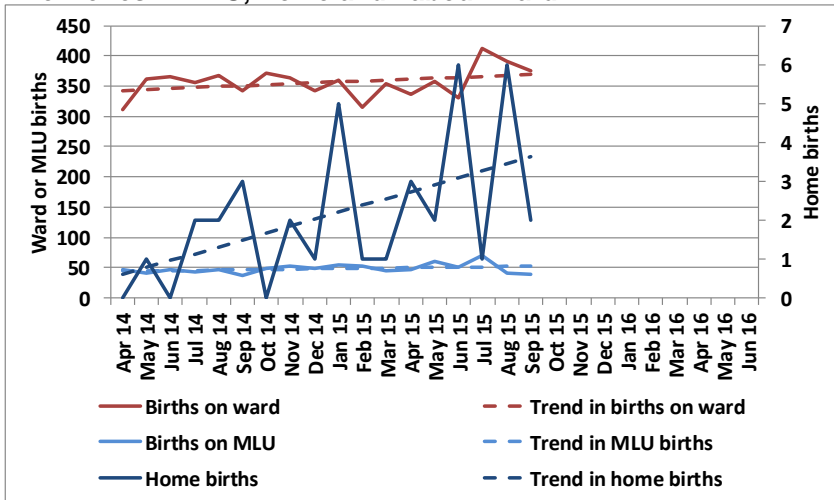
Northwick Park - Data for September 2015

Bookings and deliveries originating from Ealing postcodes



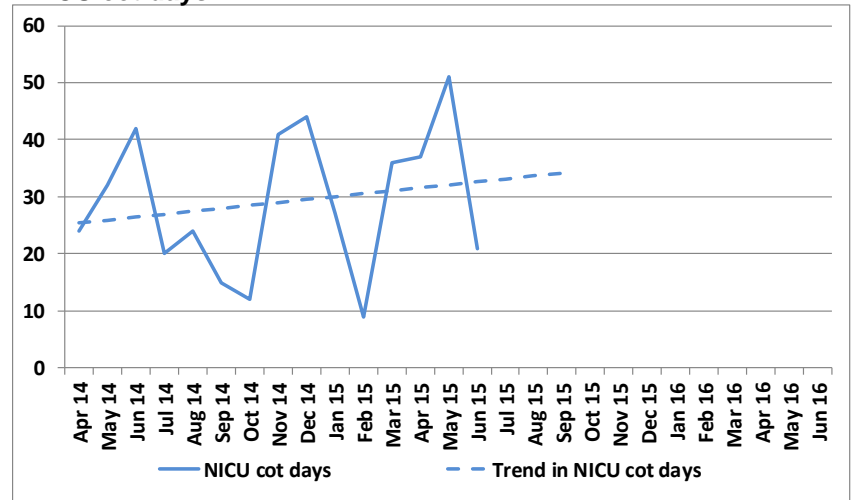
Deliveries from Ealing women are about 15 deliveries a month higher in the three months to August than the previous 12 months.

Deliveries in MLU, Home and Labour Ward



Deliveries in MLU, Home and Labour Wards remain steady in the last year with 87% of deliveries in Labour Wards and 11% in MLU.

NICU cot days



We have not had NICU information for the unit in the last 3 months.

Current attrition rate (difference between bookings and deliveries)* = 20.0%

Measure	Target	Oct 14	Nov 14	Dec 14	Jan 15	Feb 15	Mar 15	Apr 15	May 15	Jun 15	Jul 15	Aug 15	Sep 15
Midwifery to birth ratio	30	25	25	24	25	22	24	23	25	25	29	27	25
1:1 midwifery labour care	95%	96.0%	93.1%	95.5%	100.0%	98.0%	99.1%	96.9%				98.0%	
12+6 bookings rate	95%	97.6%	98.9%	96.8%	96.6%	96.1%	96.6%	94.1%	97.3%	89.8%	95.9%	98.0%	93.9%
Temporary Closures	0	0	0	0	0	0	0	0	0	0	0	0	0
SUIs	0	2	1	3	2	2	0	0	0	0	0	0	
Complaints	0	3	0	1	1	3	0	1	1				

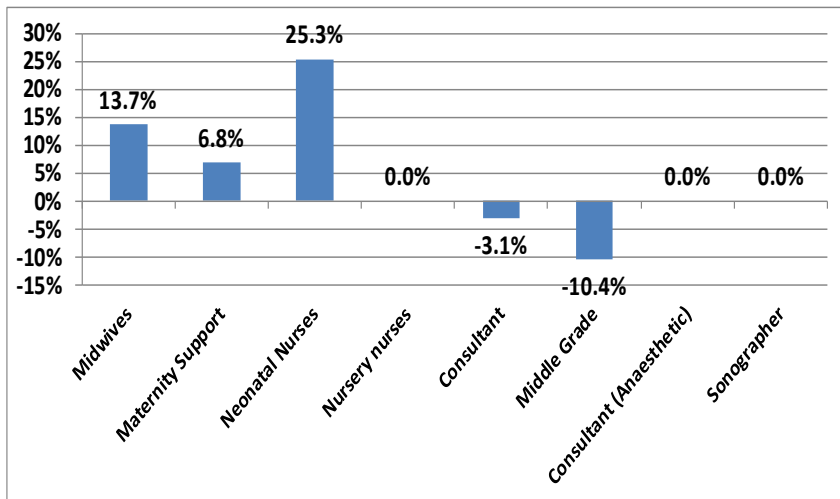
* $1 - (\text{booking} / \text{deliveries (6 months prior)}) \times 100\%$

Source: Monthly trust dashboard returns

Capacity and System Resilience Indicators:

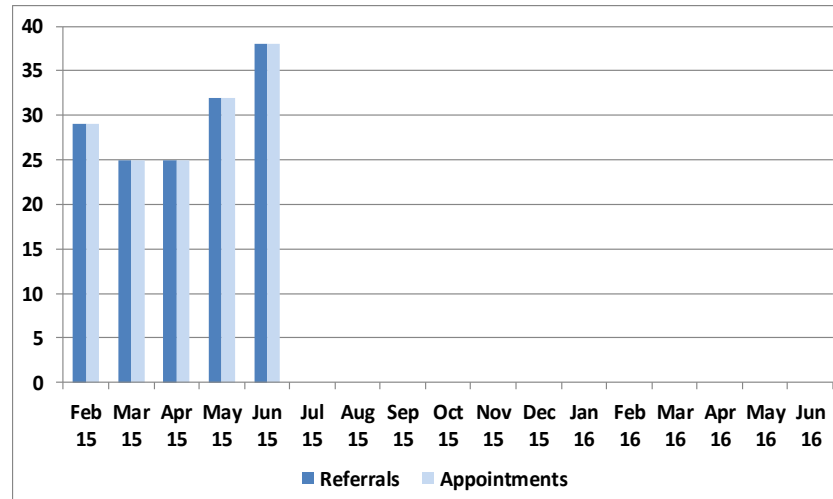
Current hours of consultant cover on ward - 98 hrs

Staff vacancy rates – LNWT w/e 30/8/2015



There are currently no vacancies for Consultant (Anaesthetic), Sonographers or Nursery Nurses with Neonatal Nurses having the largest vacancy rate of 25%.

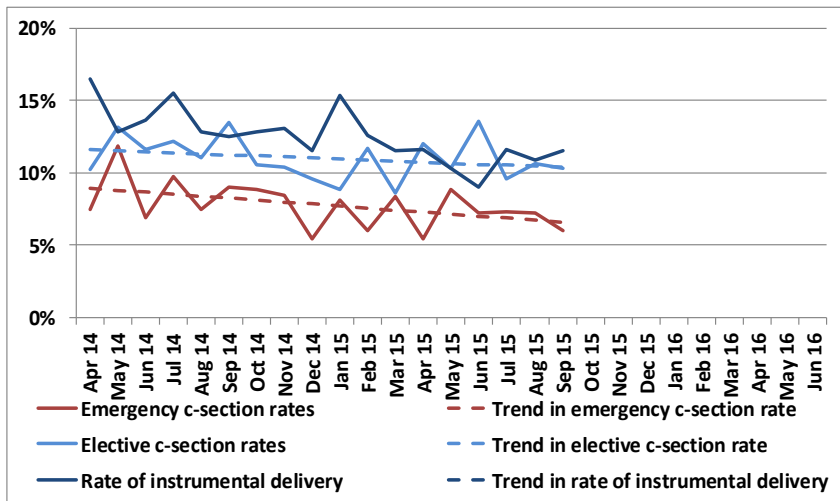
Referrals and appointments from Ealing CCG



The trust have not submitted any referral data to the maternity booking service since the later part of June.

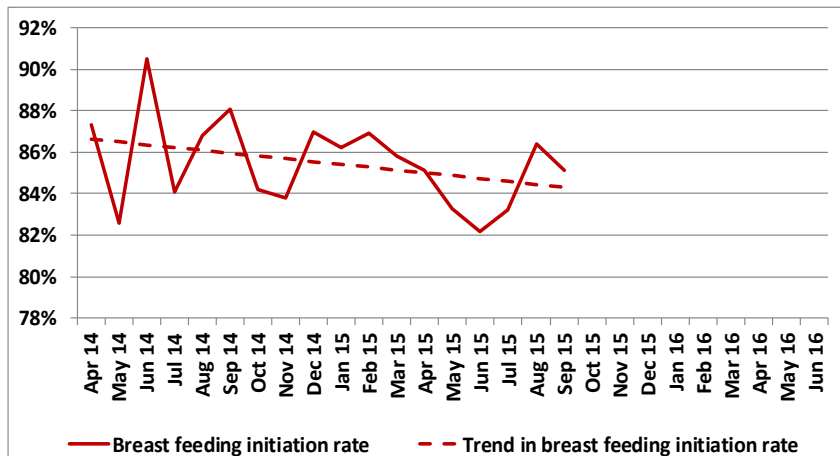
Other Quality Indicators:

Elective and emergency C-section / Instrumental deliveries



Emg. And Elec. C-section deliveries and instrumental deliveries are showing a decreasing trend accounting for c.8%, c.11% and c. 13% of deliveries respectively.

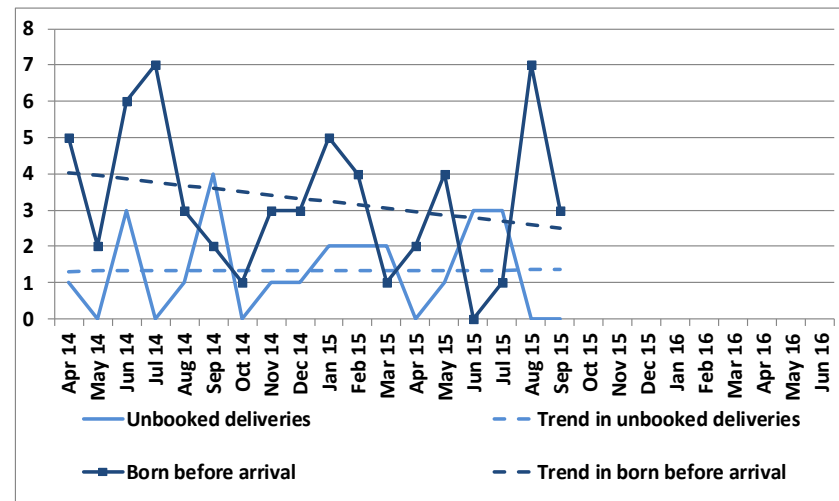
Breast feeding initiation rate



Source: Monthly trust dashboard returns

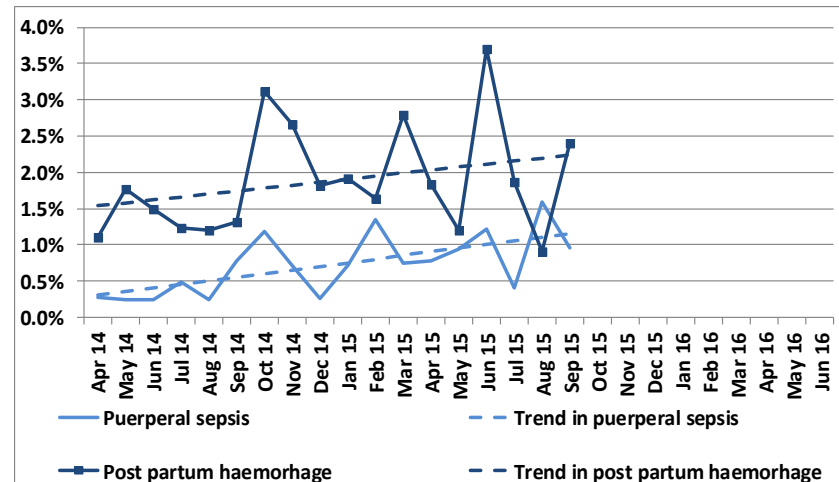
Northwick Park - Data for September 2015

Supported deliveries



BBA's reduced from the peak witnessed last month.

Post partum haemorrhage & Puerperal sepsis



The average monthly rate of post partum haemorrhage and puerperal sepsis remains 2% and 1% respectively

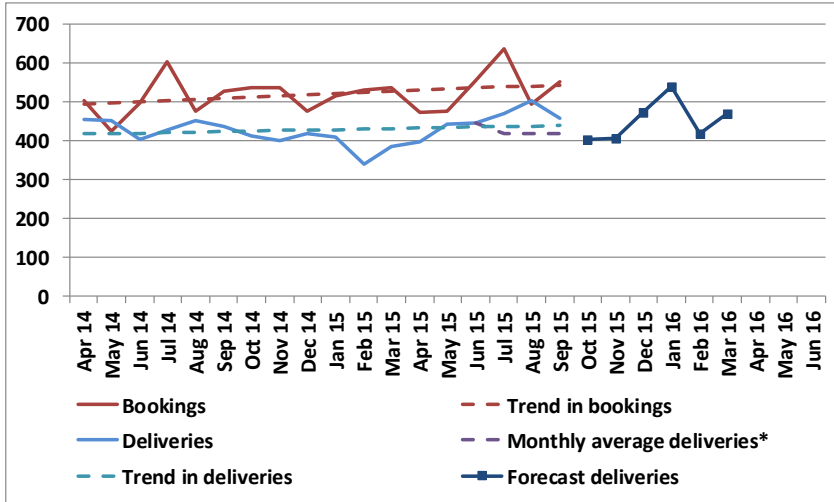


Queen Charlotte's

Monthly Maternity Transition & Quality Dashboard

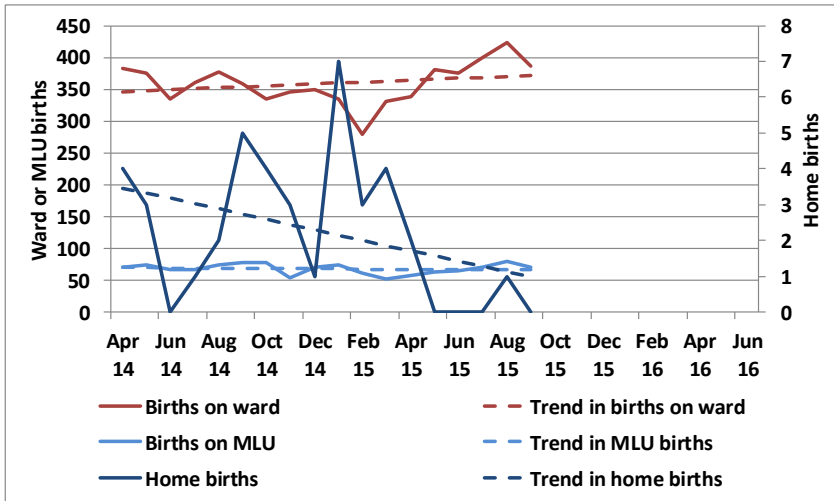
Demand Indicators:

Bookings and deliveries



Deliveries have been increasing since April. Average deliveries in the last 3 months are approx. 55 a month higher than the historic average implying c.700 more births with full year effect

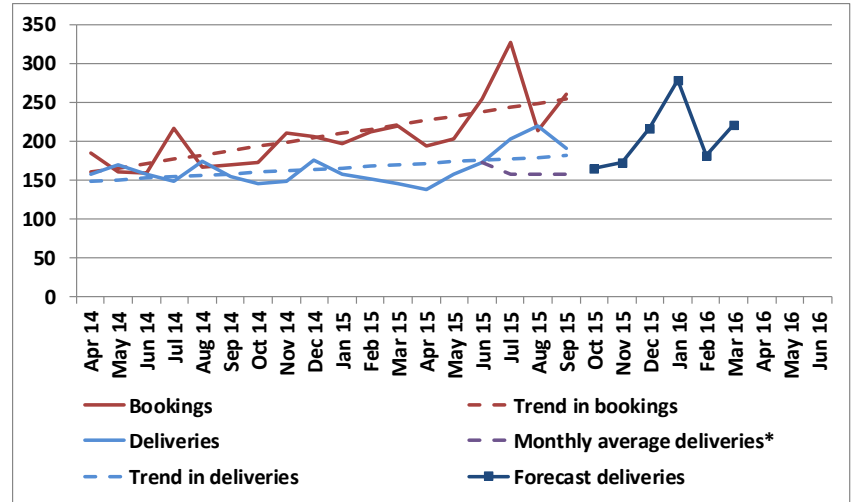
Deliveries in MLU, Home and Labour Ward



Births on the ward has remained around trend over the last 3 months

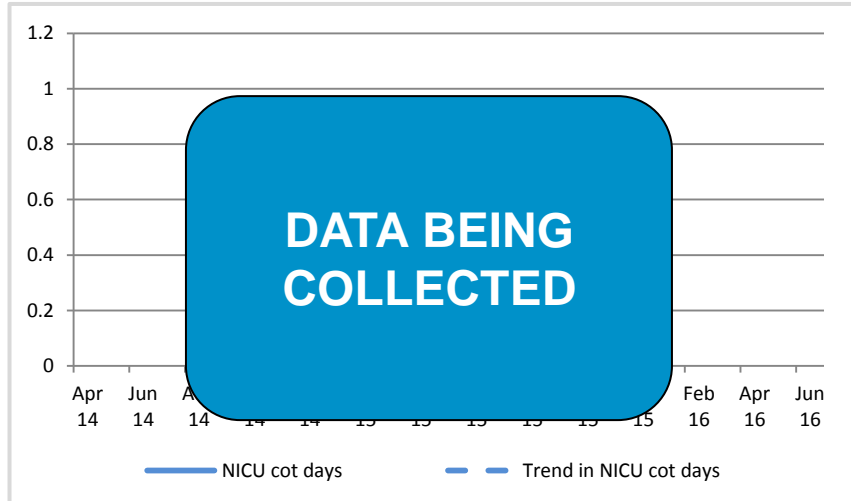
Queen Charlotte's - Data for September 2015

Bookings and deliveries originating from Ealing postcodes



Deliveries in July are 45 higher per month than the historic average implying c.600 additional deliveries from Ealing women with a full year effect

NICU cot days



[x]

Current attrition rate (difference between bookings and deliveries)* = 13.2%

Measure	Target	Oct 14	Nov 14	Dec 14	Jan 15	Feb 15	Mar 15	Apr 15	May 15	Jun 15	Jul 15	Aug 15	Sep 15
Midwifery to birth ratio	30	33	33	33	33	33	33	33	33	33	33	30	
1:1 midwifery labour care	95%							87.0%	88.0%	85.0%	81.0%	84.0%	87.0%
12+6 bookings rate	95%	94.0%	92.0%	95.0%	88.0%	92.0%	97.0%	95.0%	94.0%	96.0%	95.0%	98.0%	95.0%
Temporary Closures	0												0
SUIs	0												
Complaints	0												

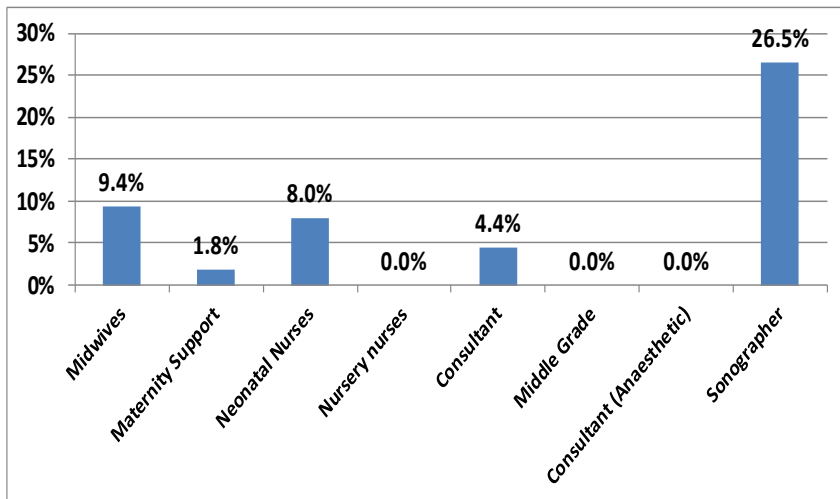
* 1 – (booking / deliveries (6 months prior) X 100%

Source: Monthly trust dashboard returns

Capacity and System Resilience Indicators:

Current hours of consultant cover on ward - 98 hrs

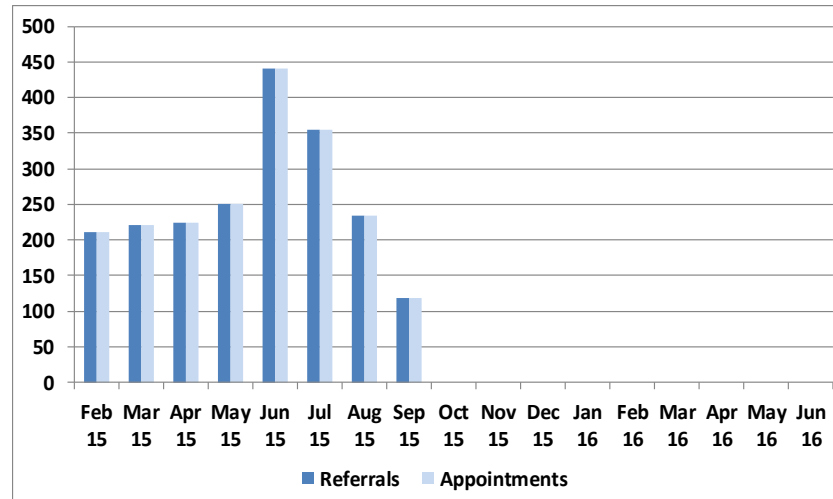
Staff vacancy rates – ICHT w/e 30/8/2015



There are currently no vacancies for consultant (anaesthetic), middle grades and nursery nurses with Sonographers having the largest vacancy rate of 27%.

Source: Trust workforce returns w/e 30 August 2015

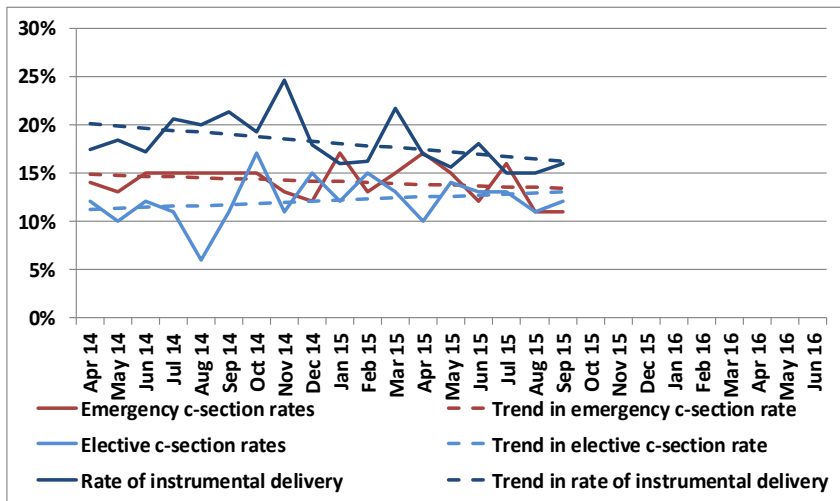
Referrals and appointments from Ealing CCG



Source: Maternity Booking Service (MBS) data

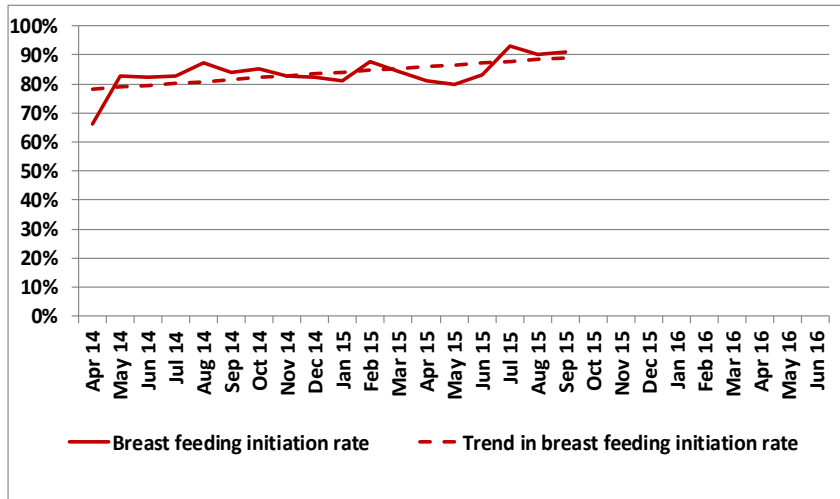
Other Quality Indicators:

Elective and emergency C-section / Instrumental deliveries



Elec. C-section deliveries are showing a slight increasing trend with emg. C-section deliveries remaining stable accounting for c.12% and c.15% of deliveries respectively. Instrumental deliveries are showing a slight decreasing trend accounting for c.16% of deliveries.

Breast feeding initiation rate

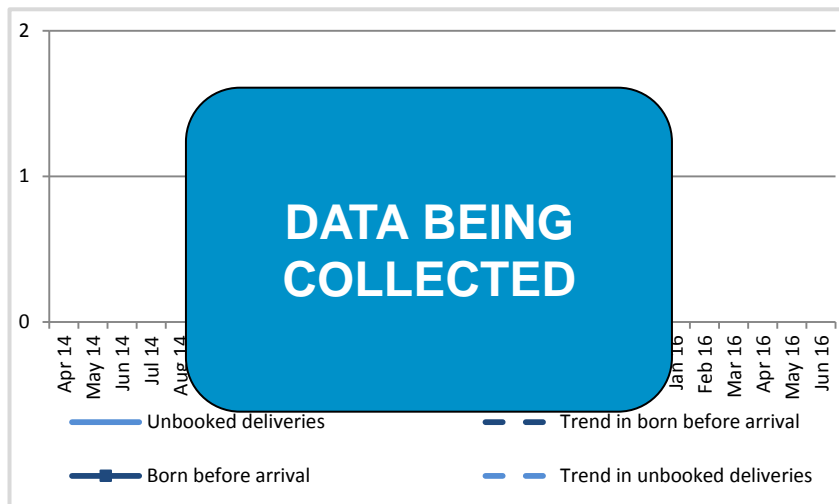


Clear increasing trend in breast feeding initiation rate, currently at 91% in September

Source: Monthly trust dashboard returns

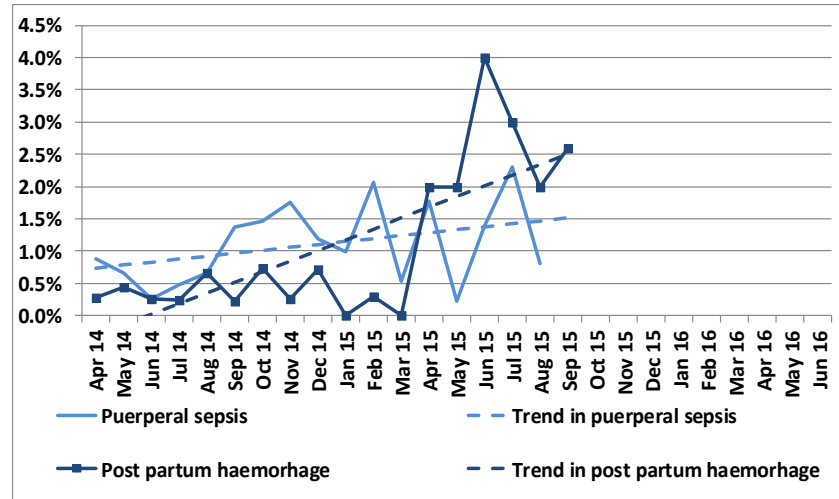
Queen Charlotte's - Data for September 2015

Supported deliveries



[x]

Post partum haemorrhage & Puerperal sepsis



Post partum haemorrhage was redefined in April which has led to a reported spike in incidence. Puerperal sepsis remains in a volatile range of 0 - 2%

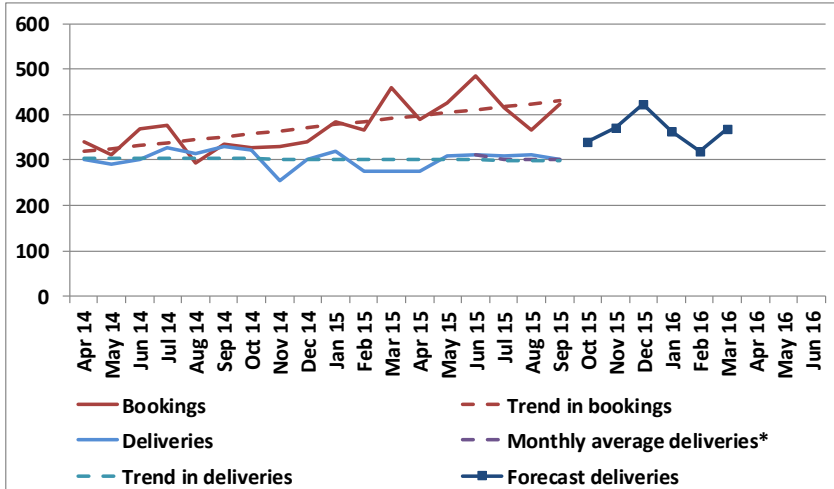


St Mary's

Monthly Maternity Transition & Quality Dashboard

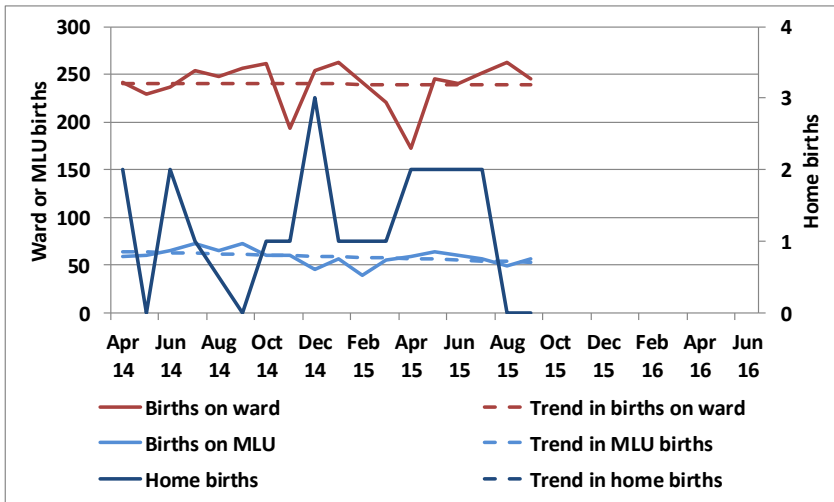
Demand Indicators:

Bookings and deliveries



The rising trend in bookings leads to a forecast increase in deliveries. Actual deliveries in July are not very different from 12 month average

Deliveries in MLU, Home and Labour Ward

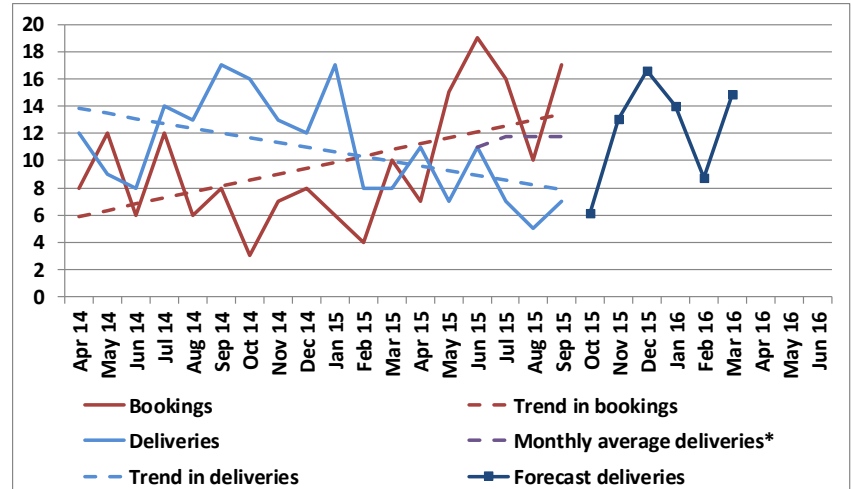


Deliveries in MLU and Labour Wards remain steady in the last year with 79% of deliveries in Labour Wards and 20% in MLU.

Source: Monthly trust dashboard returns

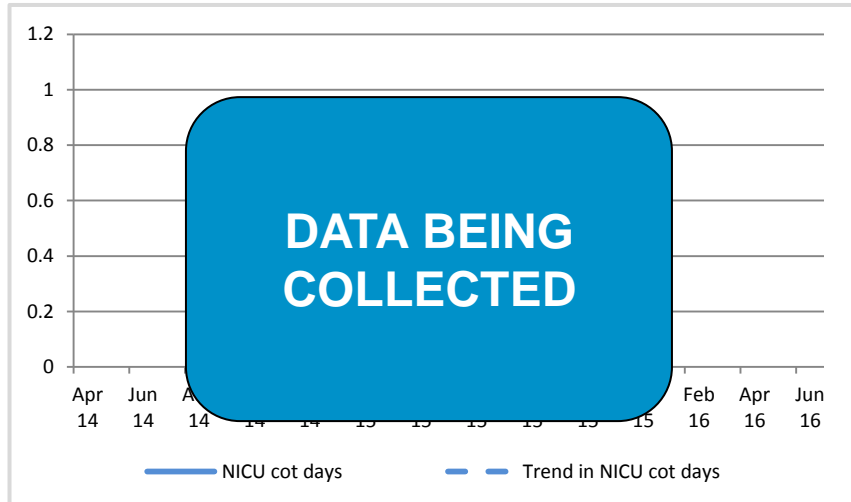
St Mary's - Data for September 2015

Bookings and deliveries originating from Ealing postcodes



Spike in bookings during transition translates to increasing trend in forecast deliveries. Reported deliveries from Ealing women remain low.

NICU cot days



[x]

Current attrition rate (difference between bookings and deliveries)* = 17.6%

Measure	Target	Oct 14	Nov 14	Dec 14	Jan 15	Feb 15	Mar 15	Apr 15	May 15	Jun 15	Jul 15	Aug 15	Sep 15
Midwifery to birth ratio	30	33	33	33	33	33	33	33	33	33	33	30	
1:1 midwifery labour care	95%											84.0%	91.0%
12+6 bookings rate	95%	90.0%	91.0%	89.0%	83.0%	89.0%	89.0%	93.0%	91.0%	96.0%	96.0%	96.0%	94.0%
Temporary Closures	0												0
SUIs	0												
Complaints	0												

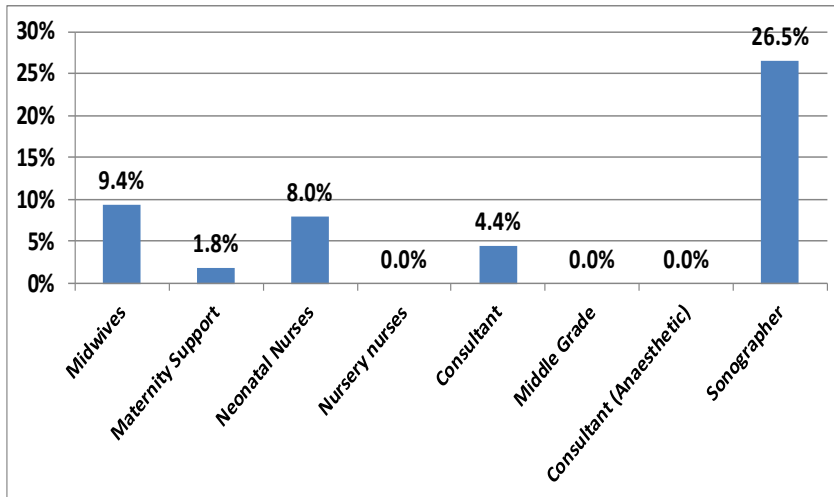
* $1 - (\text{booking} / \text{deliveries (6 months prior)}) \times 100\%$

Source: Monthly trust dashboard returns

Capacity and System Resilience Indicators:

Current hours of consultant cover on ward - 98 hrs

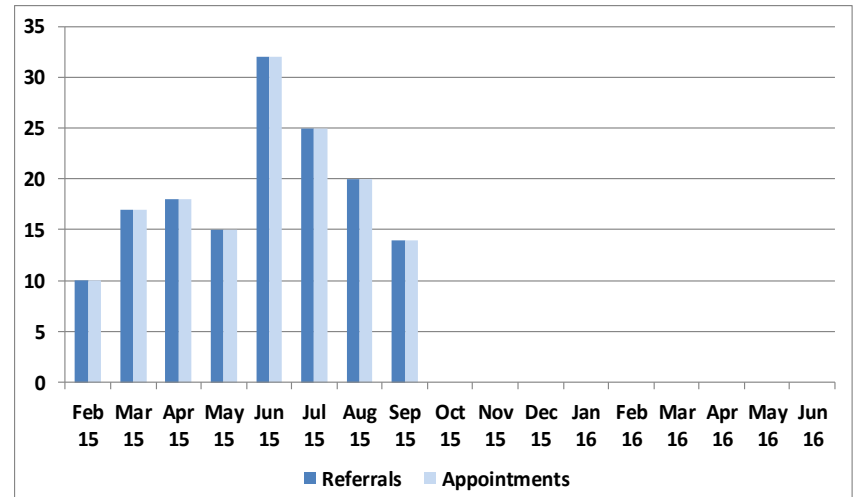
Staff vacancy rates – ICHT w/e 20/8/2015



There are currently no vacancies for consultant (anaesthetic) and middle grades with Sonographers having the largest vacancy rate of c.27%.

Source: Trust workforce returns w/e 12 June 2015

Referrals and appointments from Ealing CCG

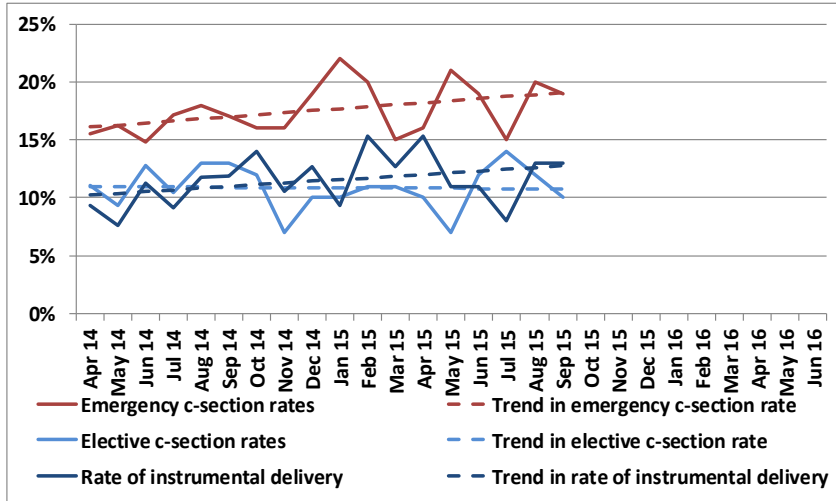


The July data still shows a higher level of referrals from Ealing women than in February to May

Source: Maternity Booking Service (MBS) data

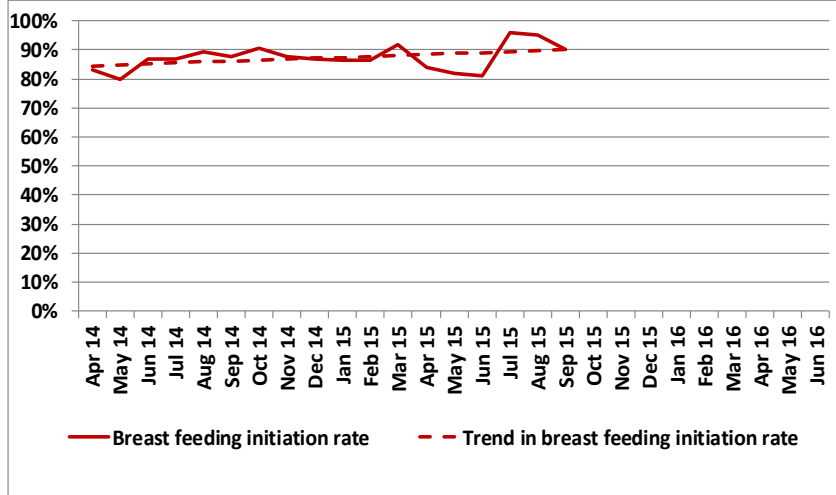
Other Quality Indicators:

Elective and emergency C-section / Instrumental deliveries



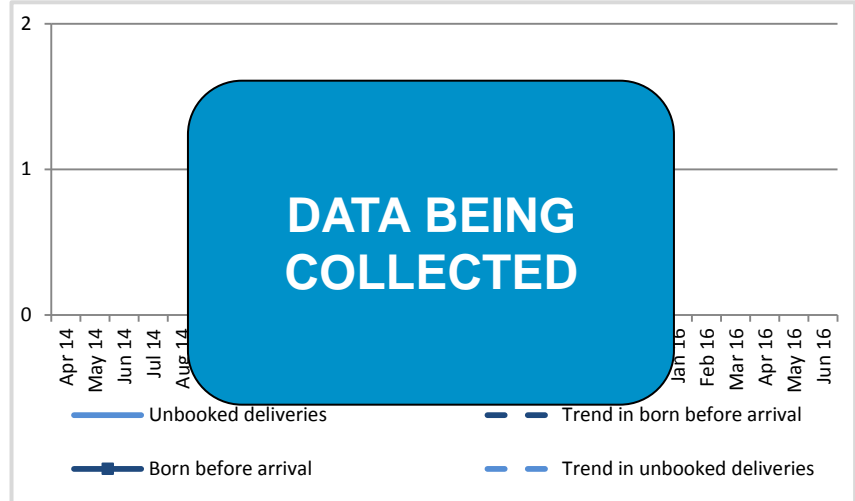
Emg. C-section deliveries are showing a slight increasing trend with elec. C-section deliveries decreasing accounting for c.18% and c.11% of deliveries respectively. Instrumental deliveries are also showing a slight increasing trend accounting for c.12% of deliveries.

Breast feeding initiation rate



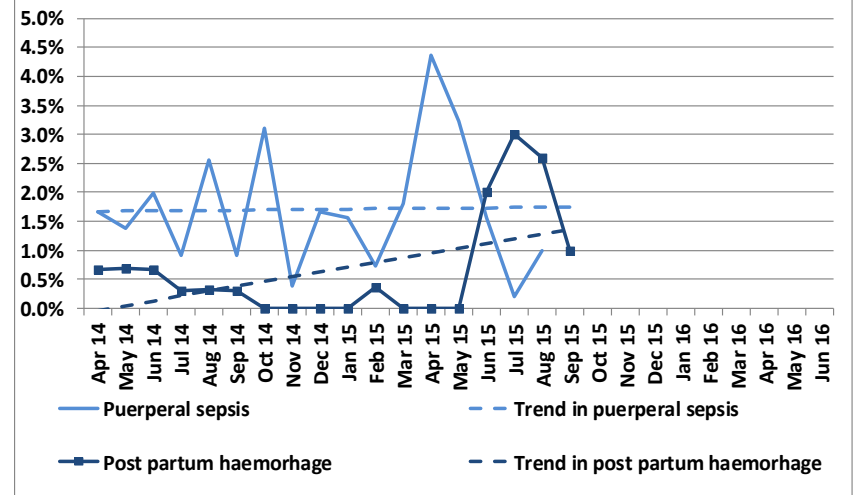
St Mary's - Data for September 2015

Supported deliveries



[x]

Post partum haemorrhage & Puerperal sepsis



Puerperal Sepsis remains centred around c1.5%-2%. Postpartum haemorrhage has been redefined and as such recent months look like an uptick in reported post partum haemorrhage

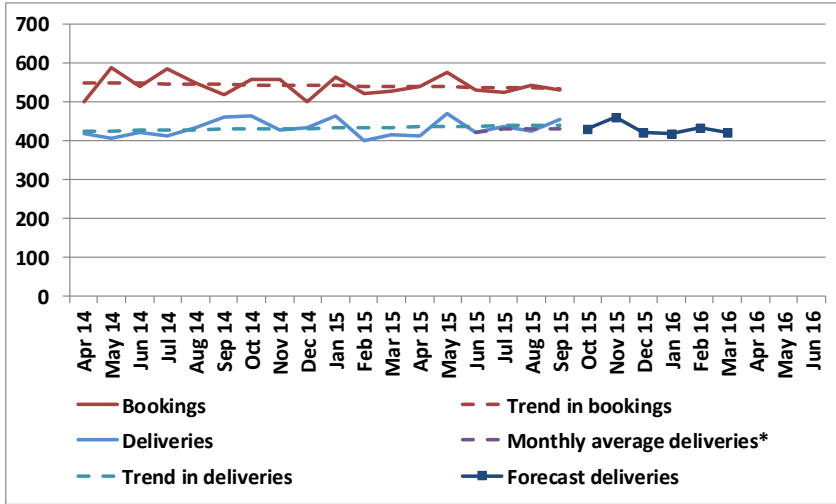


Chelsea Westminster

Monthly Maternity Transition & Quality Dashboard

Demand Indicators:

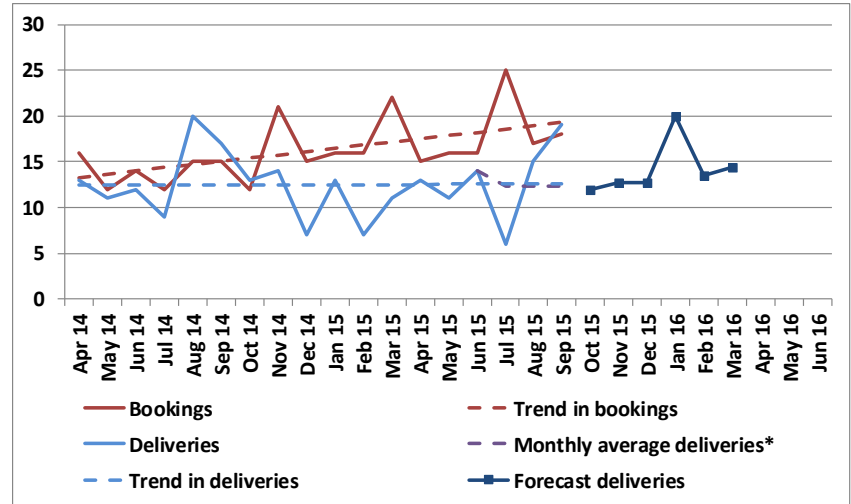
Bookings and deliveries



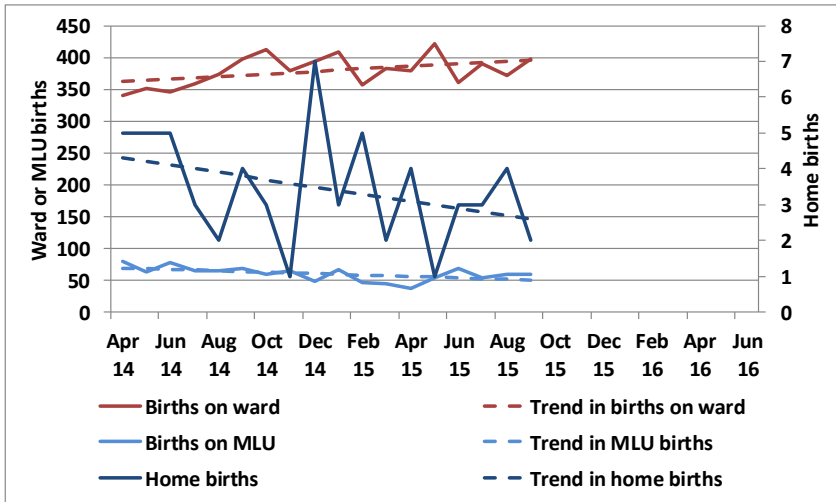
Bookings and deliveries have both remained steady in the last year totalling c.6,500 bookings and c.5,200 deliveries.

Chelsea Westminster - Data for September 2015

Bookings and deliveries originating from Ealing postcodes

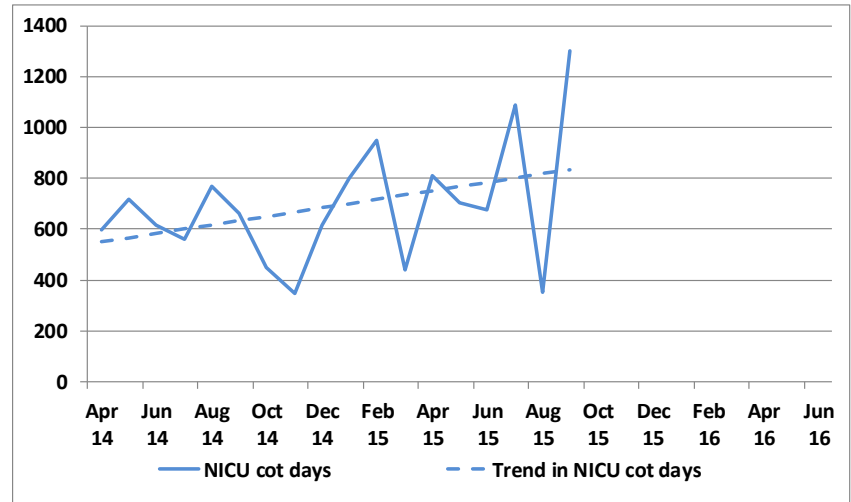


Deliveries in MLU, Home and Labour Ward



Deliveries in MLU remain steady while Labour Ward deliveries are on a slight increasing trend

NICU cot days



The monthly average over the last year is c.660 days

Current attrition rate (difference between bookings and deliveries)* = 18.9%

Measure	Target	Oct 14	Nov 14	Dec 14	Jan 15	Feb 15	Mar 15	Apr 15	May 15	Jun 15	Jul 15	Aug 15	Sep 15
Midwifery to birth ratio	30	37	30	34	36	28	30	31	38	35	36	37	30
1:1 midwifery labour care	95%	97.9%	98.4%	94.4%	96.5%	95.6%	96.0%	96.7%	93.1%	94.1%	95.0%	96.1%	98.6%
12+6 bookings rate	95%	93.4%	93.9%	95.5%	90.8%	87.9%	93.5%	90.6%	92.9%	95.1%	93.2%	94.3%	93.8%
Temporary Closures	0	0	0	0	0	0	0	0	1	0	0	1	0
SUIs	0	3	3	4	3	3	4	1	7	0	3	3	2
Complaints	0	2	7	2	1	1	4	1	1	0	0	0	

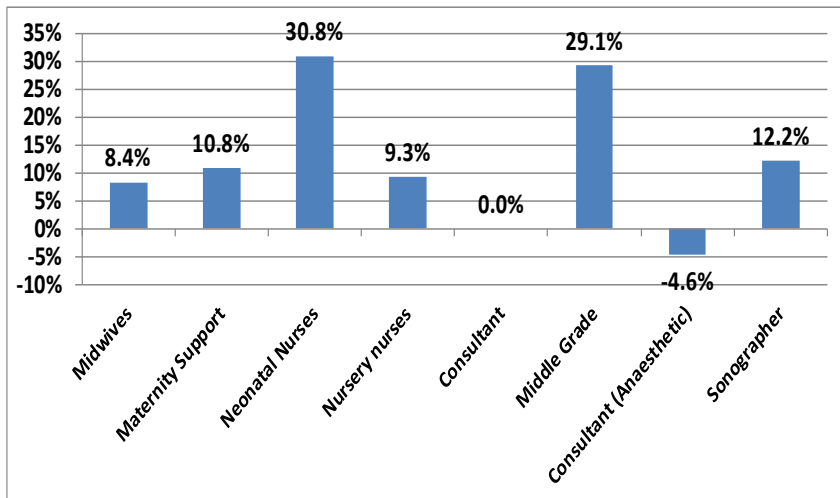
* 1 - (booking / deliveries (6 months prior)) X 100%

Source: Monthly trust dashboard returns

Capacity and System Resilience Indicators:

Current hours of consultant cover on ward - 115 hrs

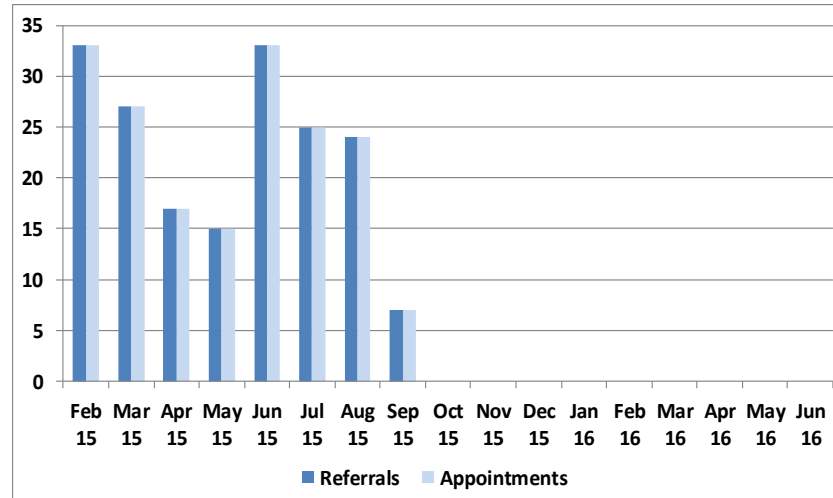
Staff vacancy rates w/e 30/8/2015



There are currently no vacancies for consultant s with Neonatal Nurses and Middle Grades having the largest vacancy rates of 31% and 29% respectively.

Source: Trust workforce returns w/e 30 August 2015

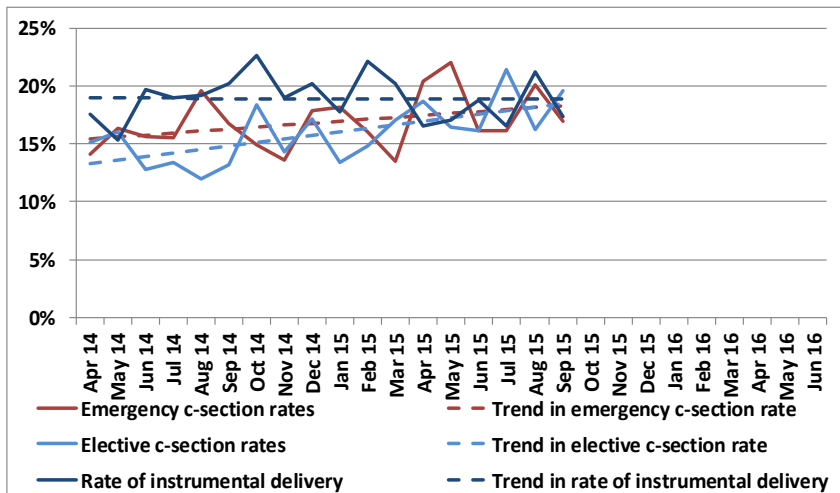
Referrals and appointments from Ealing CCG



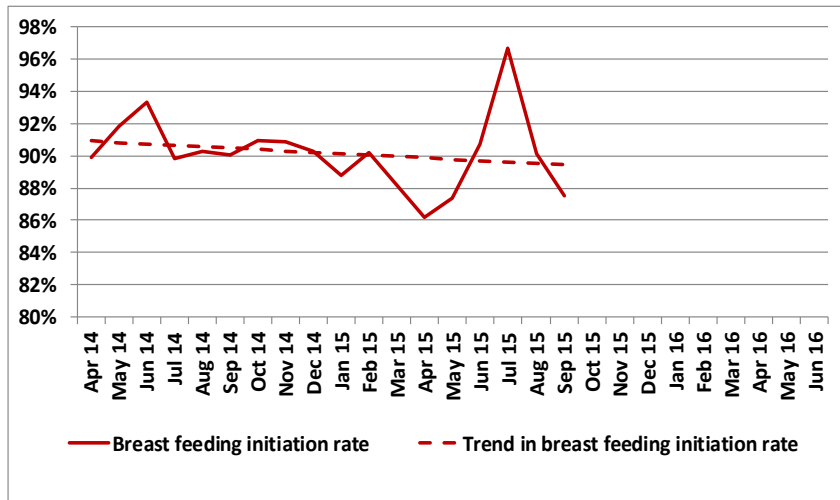
Source: Maternity Booking Service (MBS) data

Other Quality Indicators:

Elective and emergency C-section / Instrumental deliveries



Breast feeding initiation rate

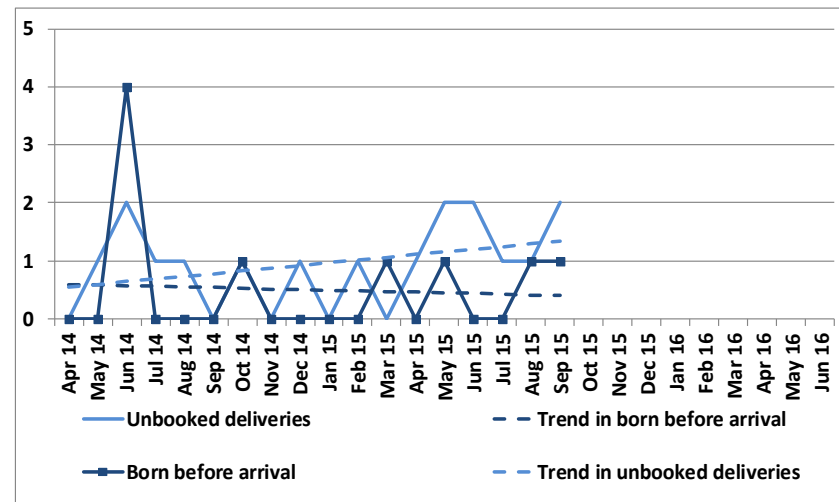


Breast feeding initiation rate saw a marked decrease in September.

Source: Monthly trust dashboard returns

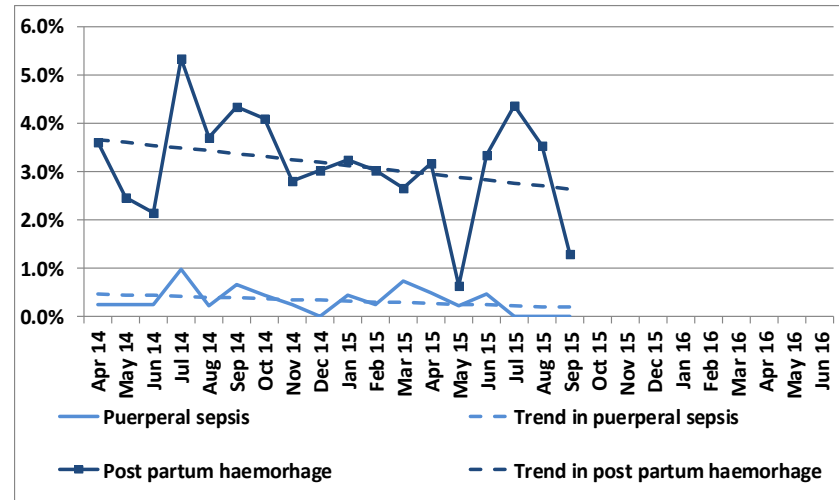
Chelsea Westminster - Data for September 2015

Supported deliveries



Supported deliveries are averaging at 1 birth born before arrival and 1 unbooked delivery per month.

Post partum haemorrhage & Puerperal sepsis



Post partum haemorrhage and puerperal sepsis remain within operational range

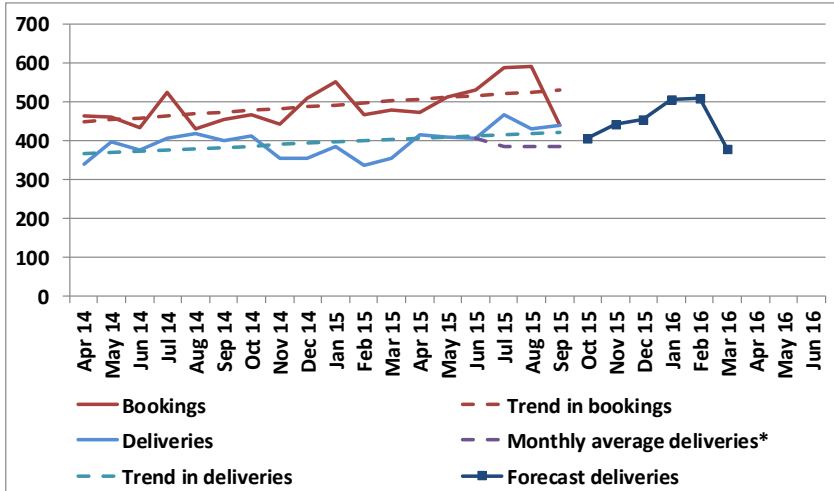


West Middlesex

Monthly Maternity Transition & Quality Dashboard

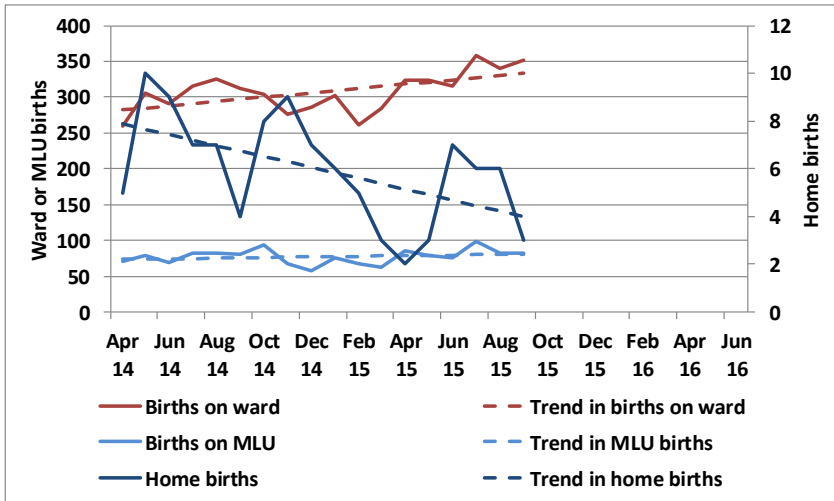
Demand Indicators:

Bookings and deliveries



Deliveries at the unit in the last 3 months are c. 40 a month higher implying c.500 a month more annually.

Deliveries in MLU, Home and Labour Ward

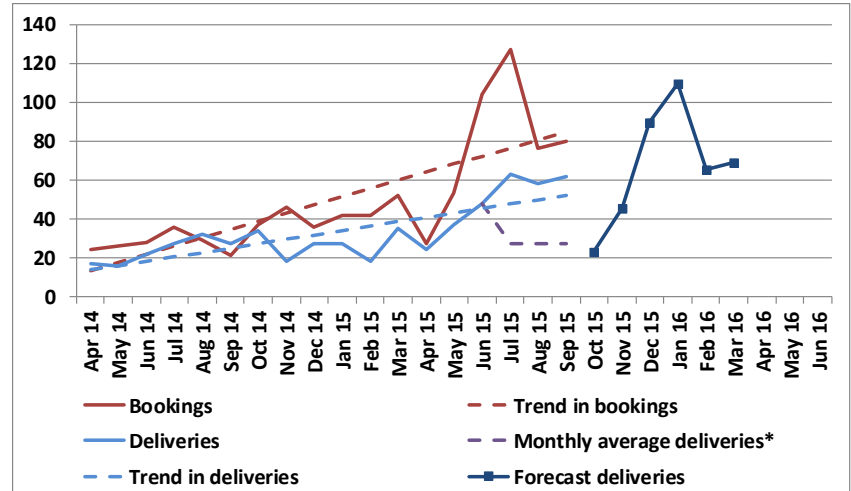


Deliveries on the labour ward and the MLU are increasing in line with activity to retain a similar mix in setting of birth to the historic pattern

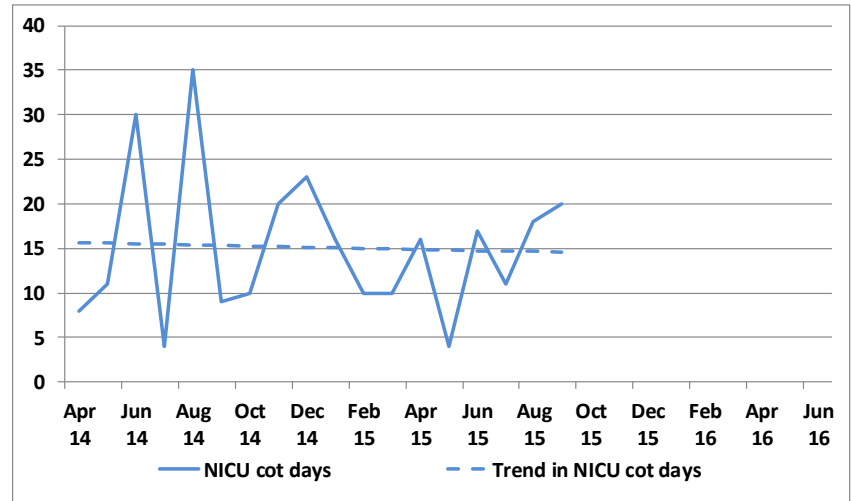
Source: Monthly trust dashboard returns

West Middlesex - Data for September 2015

Bookings and deliveries originating from Ealing postcodes



NICU cot days



NICU cot days are showing a slight decreasing trend averaging at 14 days per month over the last year.

Current attrition rate (difference between bookings and deliveries)* = 11.9%

Measure	Target	Oct 14	Nov 14	Dec 14	Jan 15	Feb 15	Mar 15	Apr 15	May 15	Jun 15	Jul 15	Aug 15	Sep 15
Midwifery to birth ratio	30	36	36	36	36	36	32	32	32	32	32	33	32
1:1 midwifery labour care	95%	94.5%	96.2%	93.1%	96.0%	95.7%	94.2%	90.6%	93.4%	94.3%	97.8%	96.5%	96.4%
12+6 bookings rate	95%	98.4%	97.8%	96.6%	96.1%	97.6%	98.9%	97.8%	98.5%	98.9%	98.9%	99.0%	97.8%
Temporary Closures	0								0	0	0	0	0
SUIs	0	0	4	2	2	1	2	1	1	0	0	1	1
Complaints	0	4	1	1	2	3	4	4	3	4	4	4	2

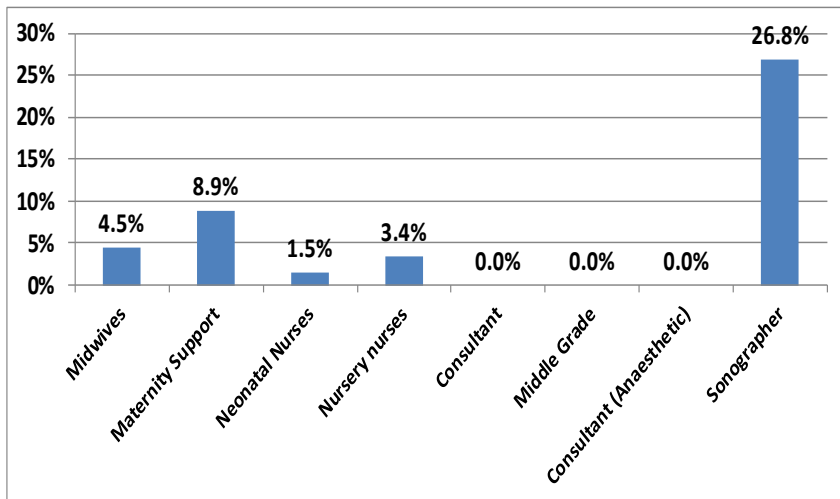
* $1 - (\text{booking} / \text{deliveries (6 months prior)}) \times 100\%$

Source: Monthly trust dashboard returns

Capacity and System Resilience Indicators:

Current hours of consultant cover on ward - 164 hrs

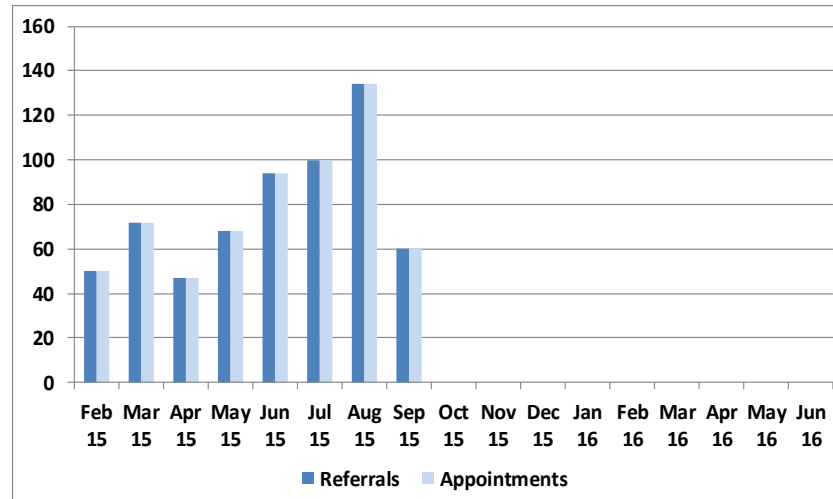
Staff vacancy rates w/e 30/8/2015



There are currently no vacancies for either consultants and middle grades with Sonographers having the largest vacancy rate of c.27%.

Source: Trust workforce returns w/e 30 August 2015

Referrals and appointments from Ealing CCG

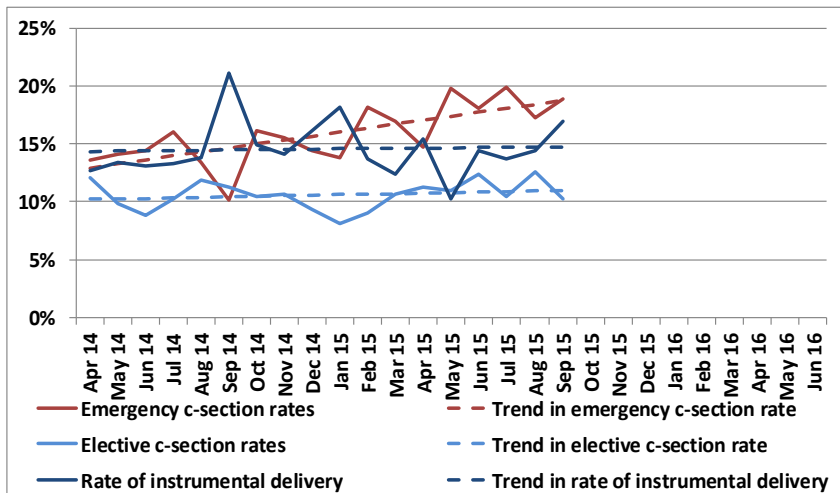


Referrals from Ealing women continue to rise in August

Source: Maternity Booking Service (MBS) data

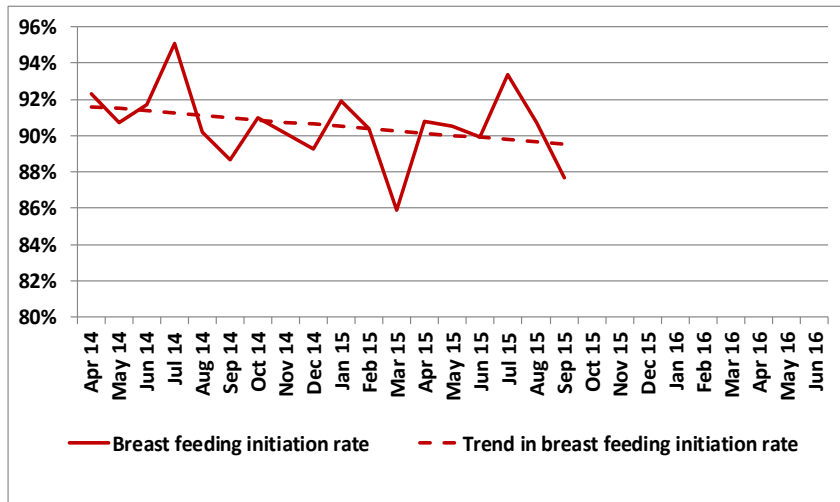
Other Quality Indicators:

Elective and emergency C-section / Instrumental deliveries



Emg. C-section deliveries are showing a slight increasing trend with elec. C-section deliveries remaining stable accounting for c.15% and c.10% of deliveries respectively. Instrumental deliveries are also showing a slight increasing trend accounting for c.15% of deliveries.

Breast feeding initiation rate

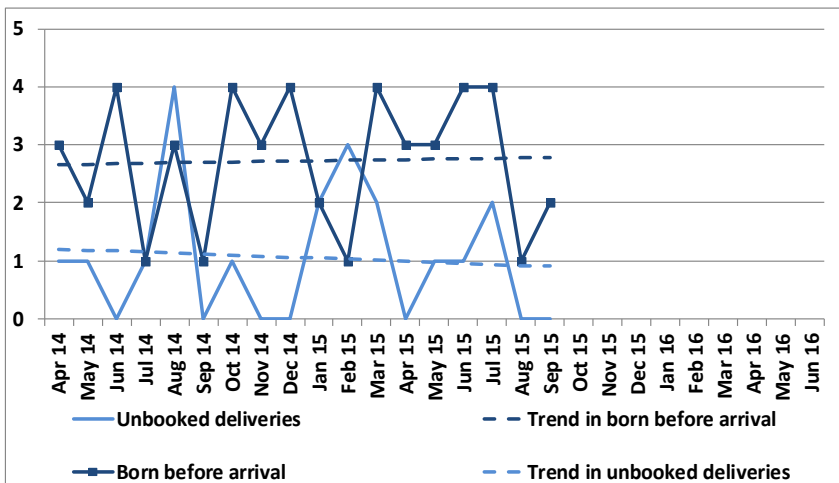


Breast feeding initiation rate is on a slight decreasing trend

Source: Monthly trust dashboard returns

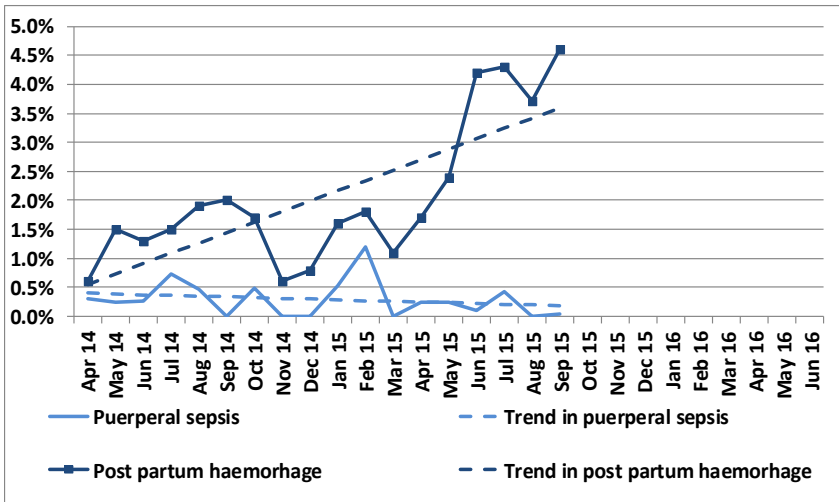
West Middlesex - Data for September 2015

Supported deliveries



On average the unit has 3 births born before arrival and 1 unbooked delivery per month.

Post partum haemorrhage & Puerperal sepsis



Puerperal Sepsis remains low averaging 0.3%. Post partum haemorrhage has been redefined and as such recent months look like an increase in reported post partum haemorrhage

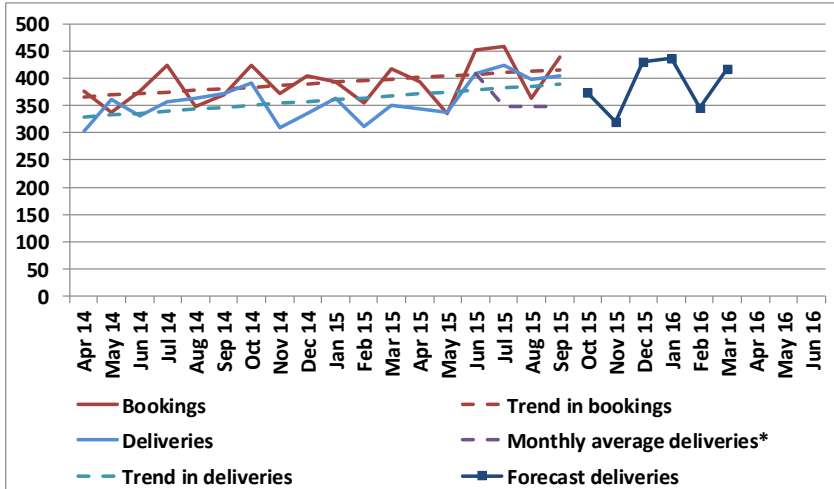


Hillingdon

Monthly Maternity Transition & Quality Dashboard

Demand Indicators:

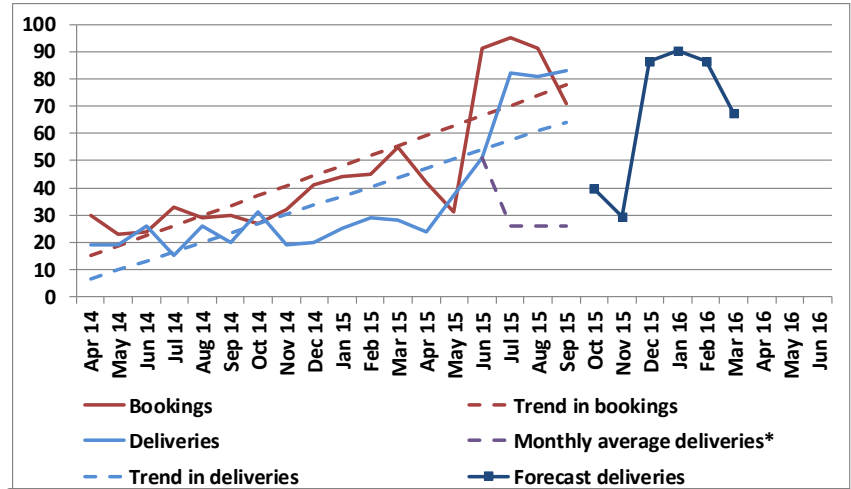
Bookings and deliveries



Deliveries at the unit over the last 3 months are 63 a month higher than in the previous 12 months implying a full year increase of c. 800 deliveries.

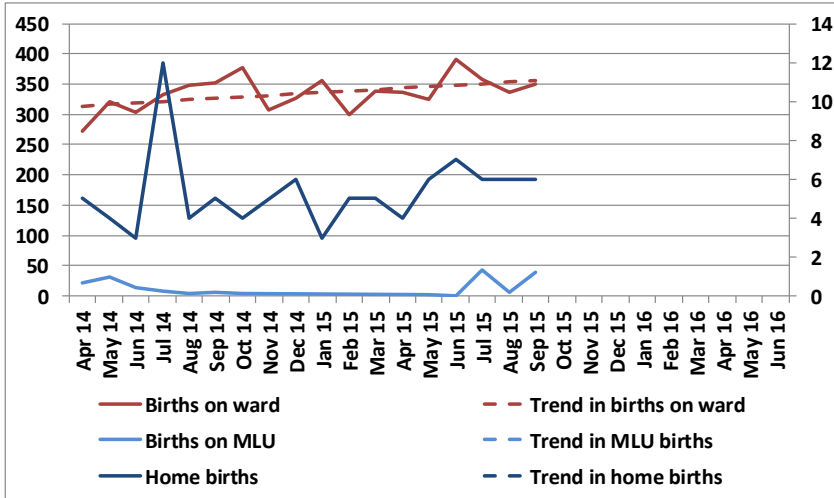
Hillingdon - Data for September 2015

Bookings and deliveries originating from Ealing postcodes



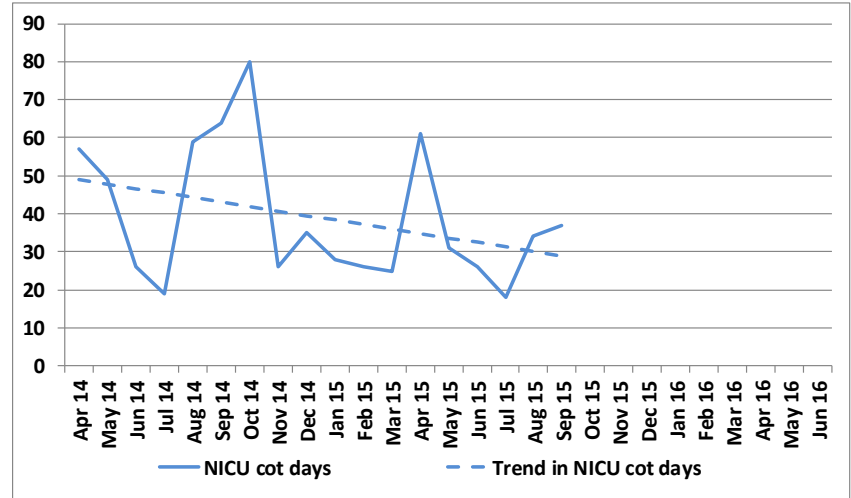
Deliveries, from Ealing women, over the last 3 months are c.55 a month higher than in the previous 12 months implying a full year increase of c. 700 deliveries.

Deliveries in Home and Labour Ward



Deliveries in Home and Labour Wards remain steady in the last year with 96% of deliveries in Labour Wards.

NICU cot days



NICU cot days are showing a decreasing trend averaging at c.40 days over the last year.

Measure	Target	Oct 14	Nov 14	Dec 14	Jan 15	Feb 15	Mar 15	Apr 15	May 15	Jun 15	Jul 15	Aug 15	Sep 15
Midwifery to birth ratio	30	35	27	30	32	27	29	29	29	34	34	32	1:32
1:1 midwifery labour care	95%	93.3%	98.1%	97.5%	96.7%	94.9%	95.4%	96.8%	96.4%	94.0%	96.8%	95.8%	95.2%
12+6 bookings rate	95%	97.2%	98.7%	97.5%	95.7%	96.0%	98.3%	96.7%	95.6%	96.8%	96.3%	98.3%	95.1%
Temporary Closures	0												
SUIs	0	1	3	0	2	2	1	6	0	0	2	0	0
Complaints	0	1	3	0	4	1	6	5	3	6	4	1	2

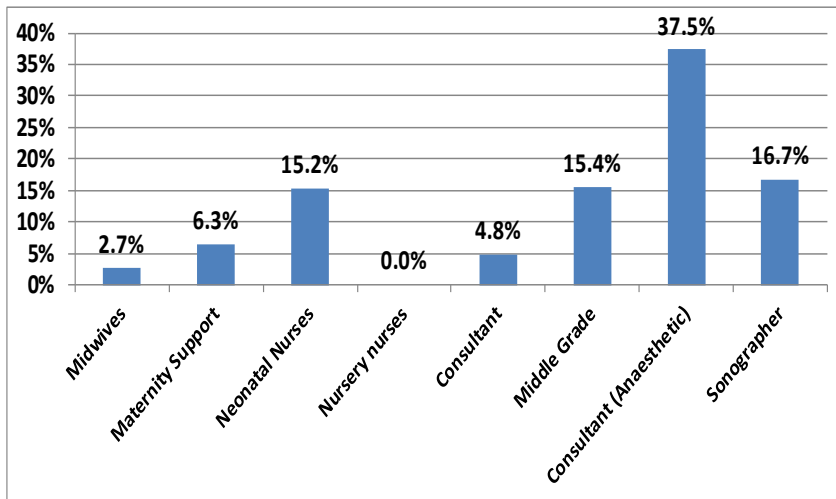
* 1 – (booking / deliveries (6 months prior) X 100%

Source: Monthly trust dashboard returns

Capacity and System Resilience Indicators:

Current hours of consultant cover on ward - 108 hrs

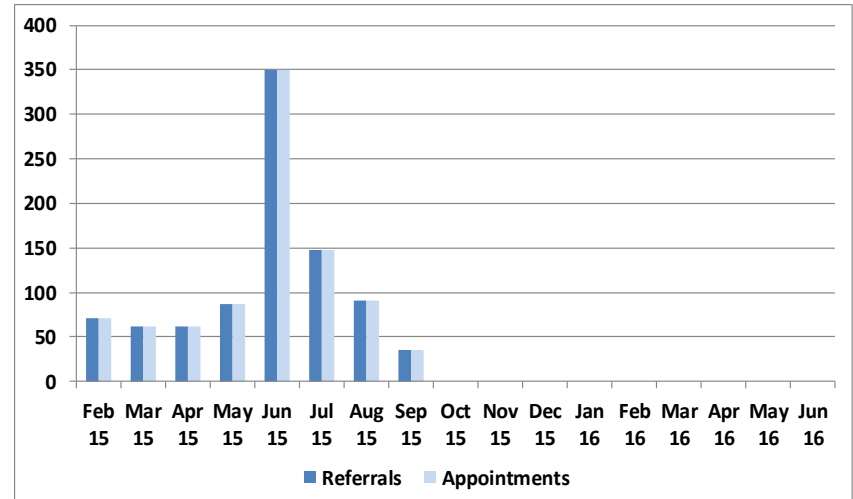
Staff vacancy rates w/e 30/8/2015



There are currently no vacancies for Nursery Nurses with Consultants (Anaesthetic) having the largest vacancy rate of 38%.

Source: Trust workforce returns w/e 30 August 2015

Referrals and appointments from Ealing CCG

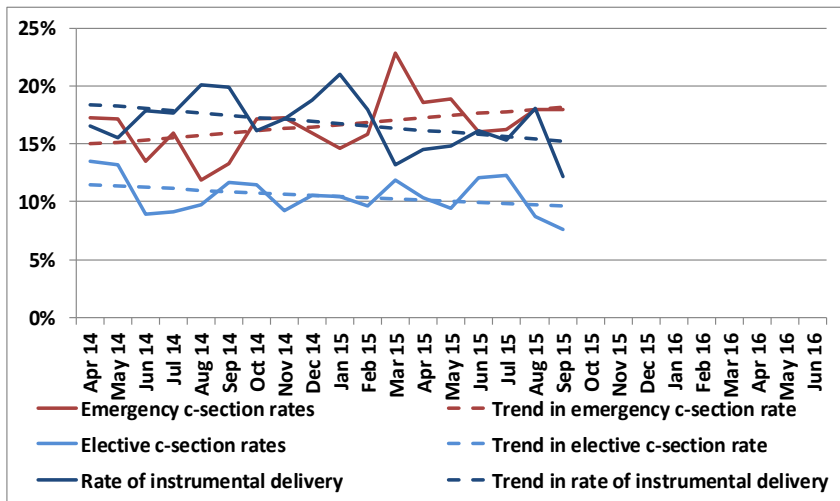


Referrals in August have returned to the level seen in May.

Source: Maternity Booking Service (MBS) data

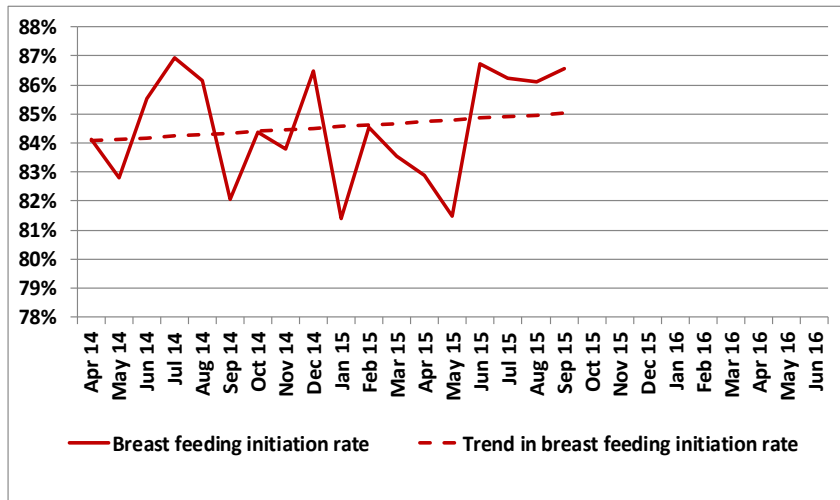
Other Quality Indicators:

Elective and emergency C-section / Instrumental deliveries



Emg. C-section deliveries are showing a slight increasing trend with elec. C-section deliveries decreasing accounting for c.16% and c.10% of deliveries respectively.

Breast feeding initiation rate

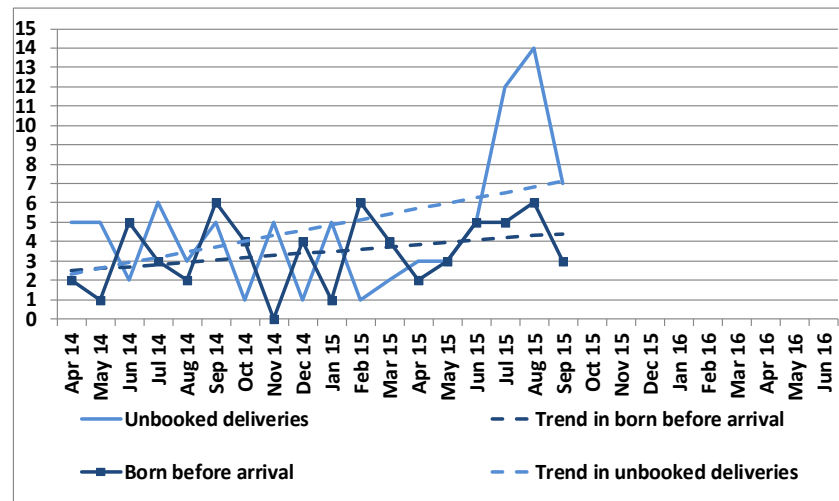


Slight increasing trend in breast feeding initiation rate, currently at 86%.

Source: Monthly trust dashboard returns

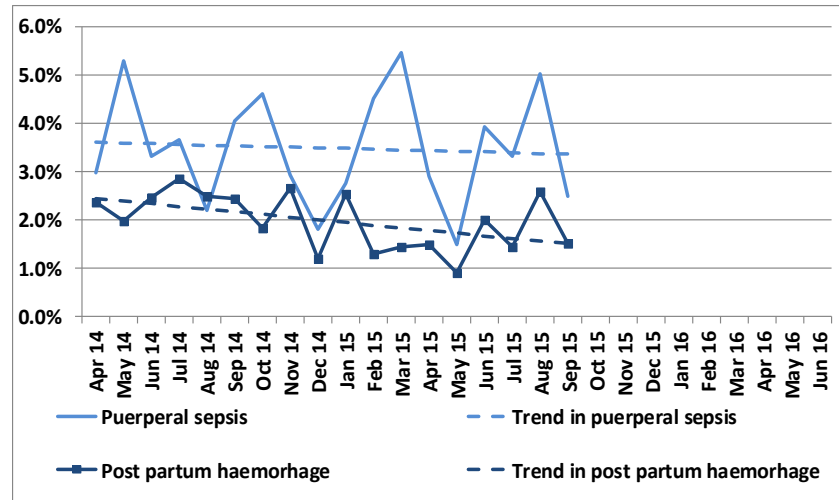
Hillingdon - Data for September 2015

Supported deliveries



As the post transition maternity system stabilises – unbooked deliveries have decreased.

Post partum haemorrhage & Puerperal sepsis



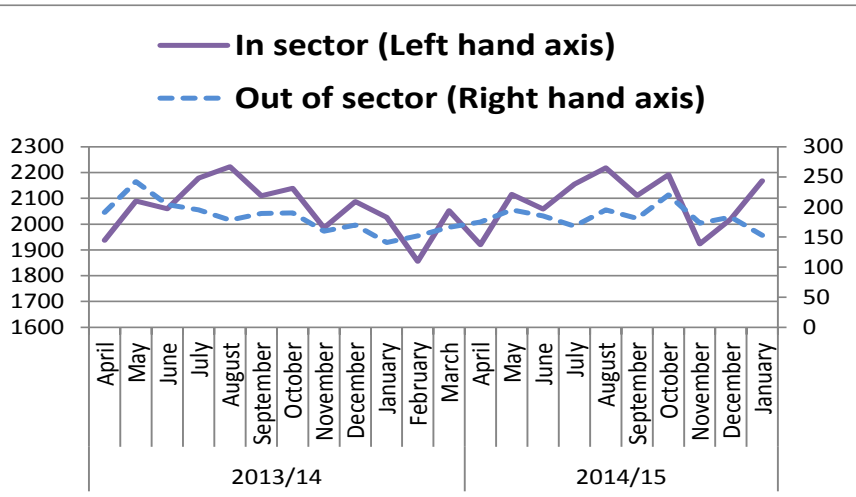
Post partum haemorrhage on decreasing trend with puerperal sepsis volatile around stable annual trend



Appendix

Maternity transition impact on out of sector flows

NWL in sector and out of sector deliveries from 1st April 2014 to 31st January 2015

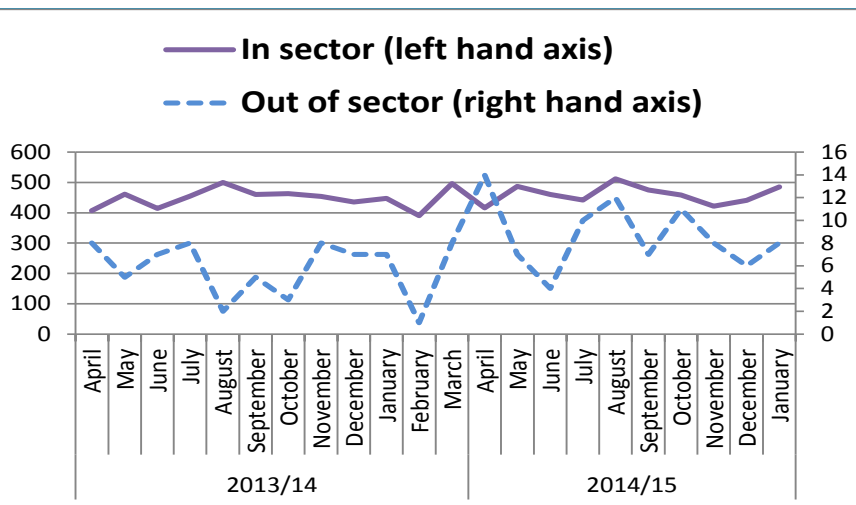


There were 26,924 reported SUS deliveries for the NWL CCGs in 2013/14. The 2014/15 M10 forecast suggests a figure close to the 2013/14 figure

The number of women from NWL and Ealing CCG delivering at providers outside NWL remains stable throughout 2013/14 and 2014/15

Source: SUS Data 2013/14 and M10 2014/15

Ealing CCG in sector and out of sector deliveries from 1st April 2014 to 31st January 2015



There were 5,451 reported SUS deliveries for Ealing CCG in 2013/14. The 2014/15 M10 forecast suggests 5,622 deliveries.

UCL (Central London CCG), The Royal Free (Brent CCG) and Barnet & Chase Farm (Harrow CCG) cared for the majority of NWL women that delivered at an out of sector provider

2014/15 Out of sector deliveries by provider

	%	Apr	May	Jun	Jul	Aug	Sep	Oct	Nov	Dec	Jan	
UCL	28%	50	60	61	35	55	58	67	57	61		
Royal Free	24%	43	41	36	40	49	42	50	41	44	48	
Barnet & Chase Farm	20%	31	42	38	38	34	36	48	28	29	48	
Guy's & St Thomas'	7%	11	11	12	15	14	11	15	11	9	15	
Ashford & St Peter's	5%	11	14	9	5	12	8	5	7	11	9	
Kingston	2%	2	3	5	6	5	6	4	4	2	1	
H'wood & Wexham	2%	3	2	3	6	2	1	4	2	5	1	
Whittington	2%	5	2	3	5	1	3	2	3	3	2	
Barts	1%	2	2	1	6	5	2	2	3	2	1	
Other	10%	17	18	17	12	18	14	23	17	17	28	
Total		175	195	185	168	195	181	220	173	183	153	1828

Source: SUS Data 2013/14 and M10 2014/15

Source: SUS Data as at M10 2014/15

Assumptions and methodology

MBS (Removing duplicate referrals):

- **Logic/Assumption:** statistically unlikely that two women would have the same booking on the same day from the same postcode at the same trust.
- **Methodology:**
 1. Unique patient ID created using referrals date and full postcode
 2. Duplicate patient ID and data removed
- Process not applied to CW and WMUH where only postcode district was given.

Forecasting Deliveries:

- **Logic/Assumption:** Bookings have a 6 month lag to delivery due to a close to 100% of bookings meeting the 12 weeks + 6 days target.
- **Methodology:**
 1. Calculate an average attrition rate based on the last 6 months of deliveries and bookings from the previous 6 months
 2. Apply this average attrition rate to the bookings from 6 months ago to forecast deliveries May 2015 onwards

