

HILLINGDON MUSIC HUB ANNUAL REPORT

Committee name	Children, Families and Education Select Committee
Officer reporting	Cathy Handley, Music Service Manager
Papers with report	None
Ward	All Wards

HEADLINES

This report provides an outline of the service provided by the Hillingdon Music Hub.

RECOMMENDATION

That the Children, Families and Education Select Committee note the report.

SUPPORTING INFORMATION

Vision

A partnership approach to providing a cohesive music education that is accessible and inclusive, enriching the lives of all children and young people.

Strategic Functions

The 5 strategic functions are set out in the [National Plan for Music Education](#).

Partnership

To build sustainable partnerships with schools, early years and other education providers, community music organisations and other regional and national youth music organisations and industry.

Schools

To support all state-funded schools through ongoing relationships to help them deliver high quality music education including a quality curriculum support offer, specialist tuition, instruments and ensembles, and a broad range of progression routes and musical experiences for all pupils.

Progression and musical development

To support children and young people to develop and progress with music, including international or specialist opportunities, higher education and employment so that the chance to be involved in high quality music making is shared more widely in our society. Support children and young people to access the wider world of music including live performance and community music.

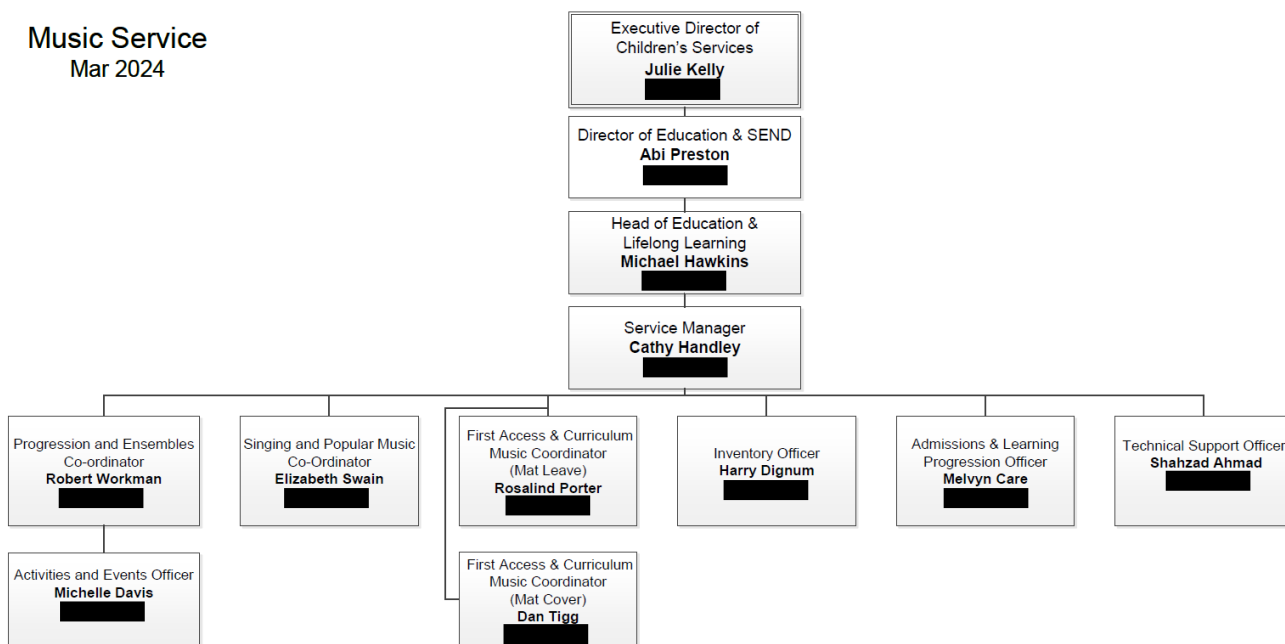
Inclusion

Drive broad access to music education so every child has the opportunity to participate irrespective of their circumstances, background, where they live or their SEND.

Sustainability

Ensure the strategic, financial, and operational sustainability of the Music Hub by supporting a dynamic and well-trained workforce leveraging DfE funding to develop wider investment into young people's music from a range of sources and revenue streams; being accountable and transparent by publishing plans needs analysis and data impact; and considering and acting on the Hub's environmental responsibilities.

Hillingdon Music Service Structure



Approximately 50 sessional teachers

Music Advisory Group

The Advisory Group has been established to advise, support, challenge and scrutinise the strategic development of the Music Hub and Music Service.

Partners:

Name of Organisation	Who they are
ABRSM	Examination Board
Collective 31	Organisation providing music opportunities for 4 special schools in Hillingdon.
Charanga	Online music software which also offers training and support for school teachers.
Focus on Sound	Online music software for secondary schools

PRSSV	World Music Specialists
Brunel University	Higher Education
ACS International School	Independent School who offers financial support
The Voices Foundation	Vocal Specialists
The Global Academy	Specialist Secondary School and our venue for Saturday and Thursday Music School.
Sound Connections	Provide training and support and are specialists in Youth Voice
Bollywood Brass	Workshop provider
The Beats Goes On*	Workshop provider
The Hillingdon Philharmonic Orchestra	Local Amateur orchestra
National Schools Symphony Orchestra*	Orchestra
National Youth Orchestra	Orchestra
The Royal Academy of Music	Further Education
National Youth Jazz Orchestra	Jazz Orchestra

Programme of Activity

Traded Services

- 1:1 lessons in schools and Centres (Manor Farm House, Compass Theatre and the Global Academy)
- Paired or Small group lessons in schools and Centres (Manor Farm House, Compass Theatre and the Global Academy)
- Whole Class Instrumental Lessons and Music Curriculum in Schools
- Ensembles/Choirs (Bands, Orchestras, Ukulele, Steel Band, Music Theory)

School Events and Support

Sing! Primary Singing Festival – October - March @ The Beck theatre and The Civic Centre (more info [Our schools programme - Hillingdon Council](#)) - Free of charge

A partnership project with Voices Foundation with part funding from ACS International School. It is a 6-month programme designed to encourage and support choirs in primary schools. This year 16 primary schools took part, including one special school. There were 12 schools on the waiting list.

Primary schools will be given an opportunity to learn and perform a school solo, work towards a massed song, meet other school singers and learn more about music and performance in breakout workshops.

Carols at the Christmas Lights Switch On – Friday 24th November 2023 4:30-6:45pm @ The Civic Centre (more info [Our schools programme - Hillingdon Council](#)) - Free of Charge

An opportunity for five primary school choirs to perform at the annual switching on of the Christmas Lights event at the Civic Centre alongside the Hillingdon Music Service's Young Singers and Brass Band. This is a public performance in front of the Mayor and Councillors. Schools are provided with resources and offered visits from Hillingdon Music Service specialist

music teachers to support their learning.

Termly Music Teachers' Choir @ The Civic Centre (more info [CPD workshops - Hillingdon Council](#)) - Charged Event

Led by Rose Martin from Voices Foundation, this is an opportunity for Hillingdon secondary and primary school music teachers to learn more about singing, and leading singing, by participating in a staff singing group.

'Blast' Online Competition (more info [Our schools programme - Hillingdon Council](#))

A competition for junior school classes who are having whole class instrumental tuition.

Exam Centre

We run as a private centre for music exams at Manor Farm House. We access funding available from the ABRSM discount scheme to help alleviate some of the financial barriers that families may face when accessing exams. This is part of our work in becoming an increasingly open, accessible and inclusive organisation and is a key focus within our Diversity & Inclusion Plan.

Performance Opportunities

Music School Winter Concerts @ The Winston Churchill Theatre or Beck Theatre

Emerging Talent Workshop April @ The Global Academy

A competition for emerging young instrumentalists/singers performing music from any culture or background. Successful candidates will get the opportunity to be coached by experienced musicians.

Hayes Canal Festival – May 2024

A community event providing a performance opportunity for Hillingdon music Service Ensembles.

Music School Spring Open Rehearsals – @ the Global Academy

An opportunity for caregivers to see their children perform in an informal setting with all the Music Service Ensembles. Young people are encouraged to talk to the audience about what they have been learning.

New Event Interfaith Service – Celebrating Diversity in Hillingdon – April 2024 @ St Margarets Church

A Civic Event to celebrate religious diversity and coexistence. It will bring together poetry, music, art and dance to present the different communities in Hillingdon. The music service String Sinfonia will play alongside other community groups and schools. There will be invitations sent to schools to invite students to participate in an art competition to draw a picture that best captures 'Diversity in Hillingdon'. The best of these will be displayed in the church during the service.

String Start Ups – June @ The Global Academy (more info [Concerts and events - Discover Hillingdon](#))

Beginner string players are invited to experience what it is like performing with other musicians. This short event finishes with a concert to friends and family and an invitation to join Saturday Music School from September. Open to school years 4 to 6.

Wind, Brass and Percussion Start Ups June @ The Global Academy (more info [Concerts and events - Discover Hillingdon](#))

Beginner wind, brass and percussion players are invited to experience what it is like performing

with other musicians. This short event culminates in a concert to friends and family and an invitation to join Saturday Music School from September. Open to school years 4 to 6.

Music School Open Day – June @ The Global Academy (more info [Concerts and events - Discover Hillingdon](#))

An opportunity to see what happens during the morning at Hillingdon's Saturday and Thursday Evening Music Schools. Young people get to listen to some of our groups while they rehearse, and take a tour of all the other activities taking place.

Picnic in the Park – June 2024 @ at parks across the South of the Borough

Following on from the success and popularity of the Kings Coronation the council is supporting an annual event to be held in a different part of the borough.

Encore: A Celebration of Music - July 2024 @ Cadogan Hall

A high-profile performance opportunity at a central London venue for all our classical ensembles.

Foreign Tour to Tuscany - July 2024

Targeted programmes for children and adolescents – School holidays @ various venues (more info [Targeted programmes for children and adolescents - Hillingdon Council](#))

A variety of musical opportunities from DJ skills to brass instrument introductions delivering my external partners and Hillingdon Music Service Tutors. The programme is available to young people through professional referral in need of targeted support.

Further information available here:

[The power of music to change lives: a national plan for music education - GOV.UK \(www.gov.uk\)](#)

[Hillingdon Music Service – Hillingdon Council](#)

PERFORMANCE DATA

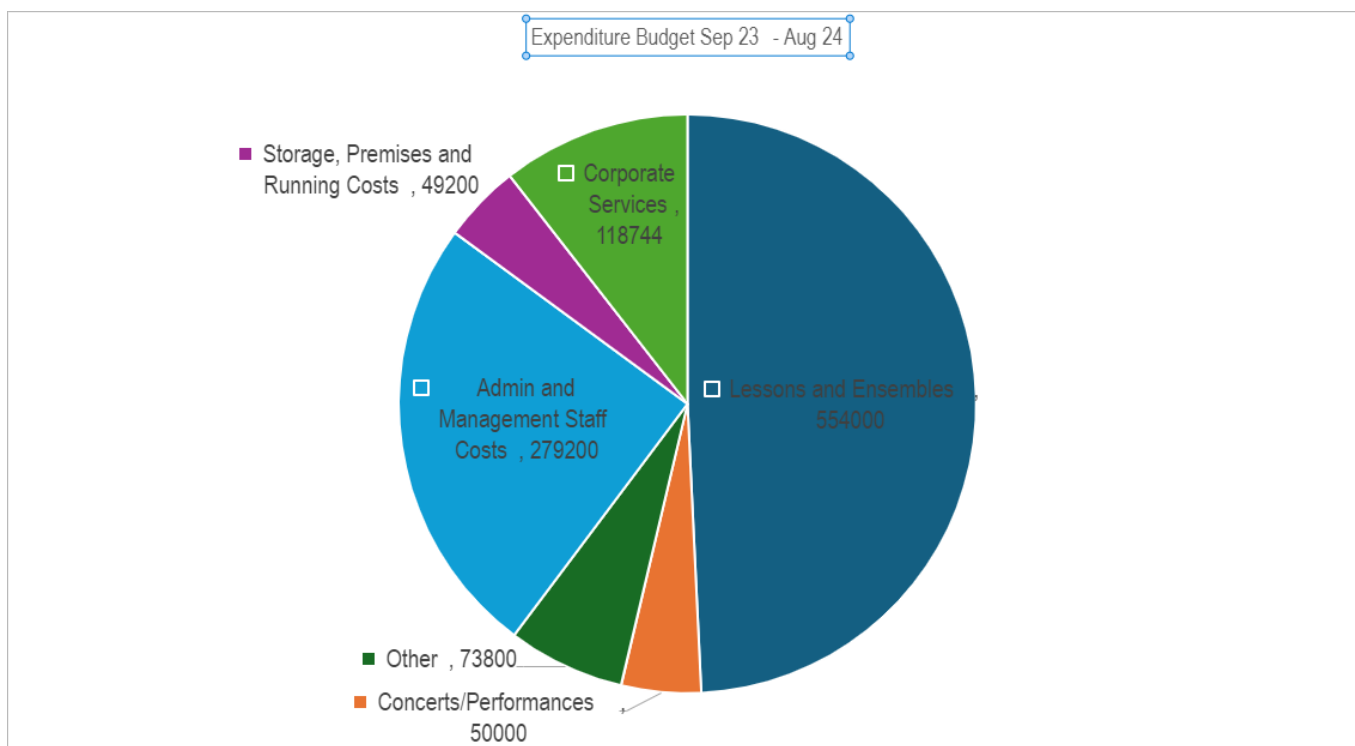
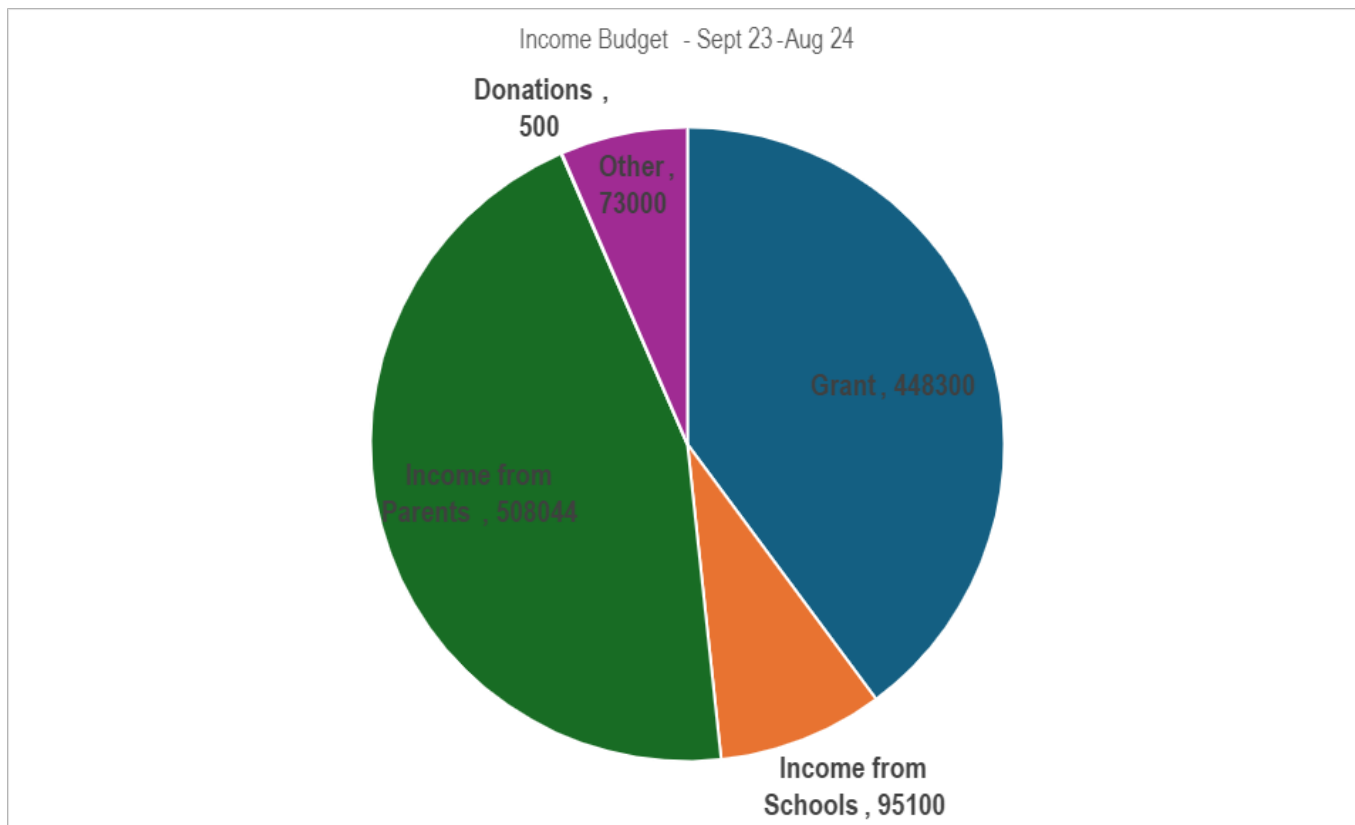
Direct engagement with 64% of schools through events and supporting activities.
252 Pupils receiving advanced tuition (1-2-1 30 minute lessons)
664 Pupils receiving standard Tuition (Small group lessons)
10 schools receiving whole class lessons
269 in ensembles

RESIDENT BENEFIT

“Hillingdon Music Service provides music lessons in schools to whole classes, small groups and individuals. We also support schools to deliver their own music provision and provide opportunities for networking, resources, workshops and events. We offer a wide range of bands and orchestras at our Saturday Music School, which perform in high quality concerts locally, in London and abroad.”

[Hillingdon Music Service – Hillingdon Council](#)

FINANCIAL IMPLICATIONS



LEGAL IMPLICATIONS

None at this stage.

BACKGROUND PAPERS

NIL.